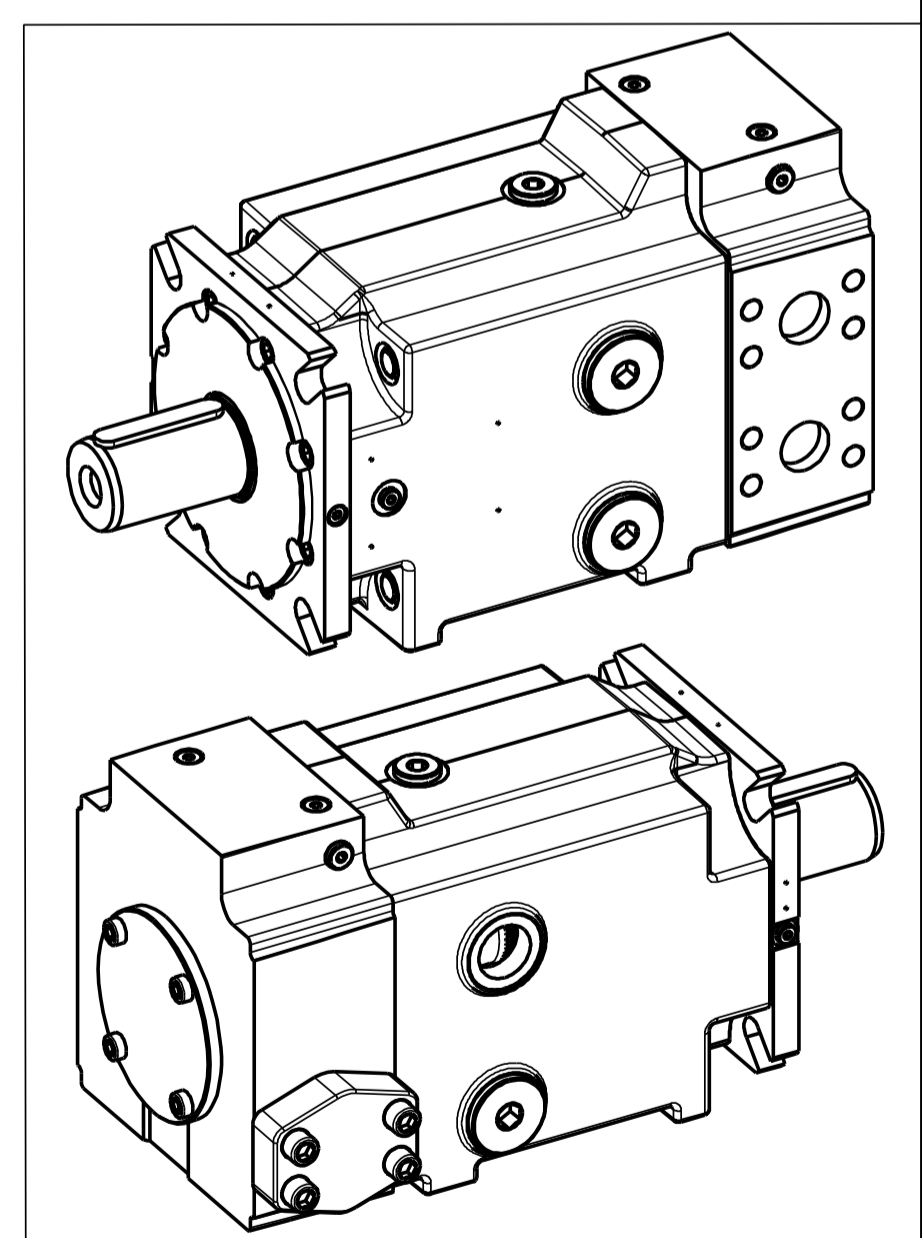
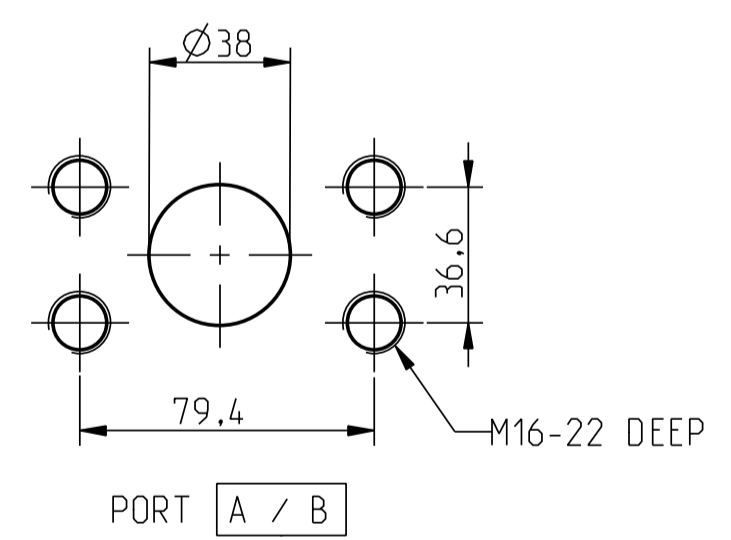
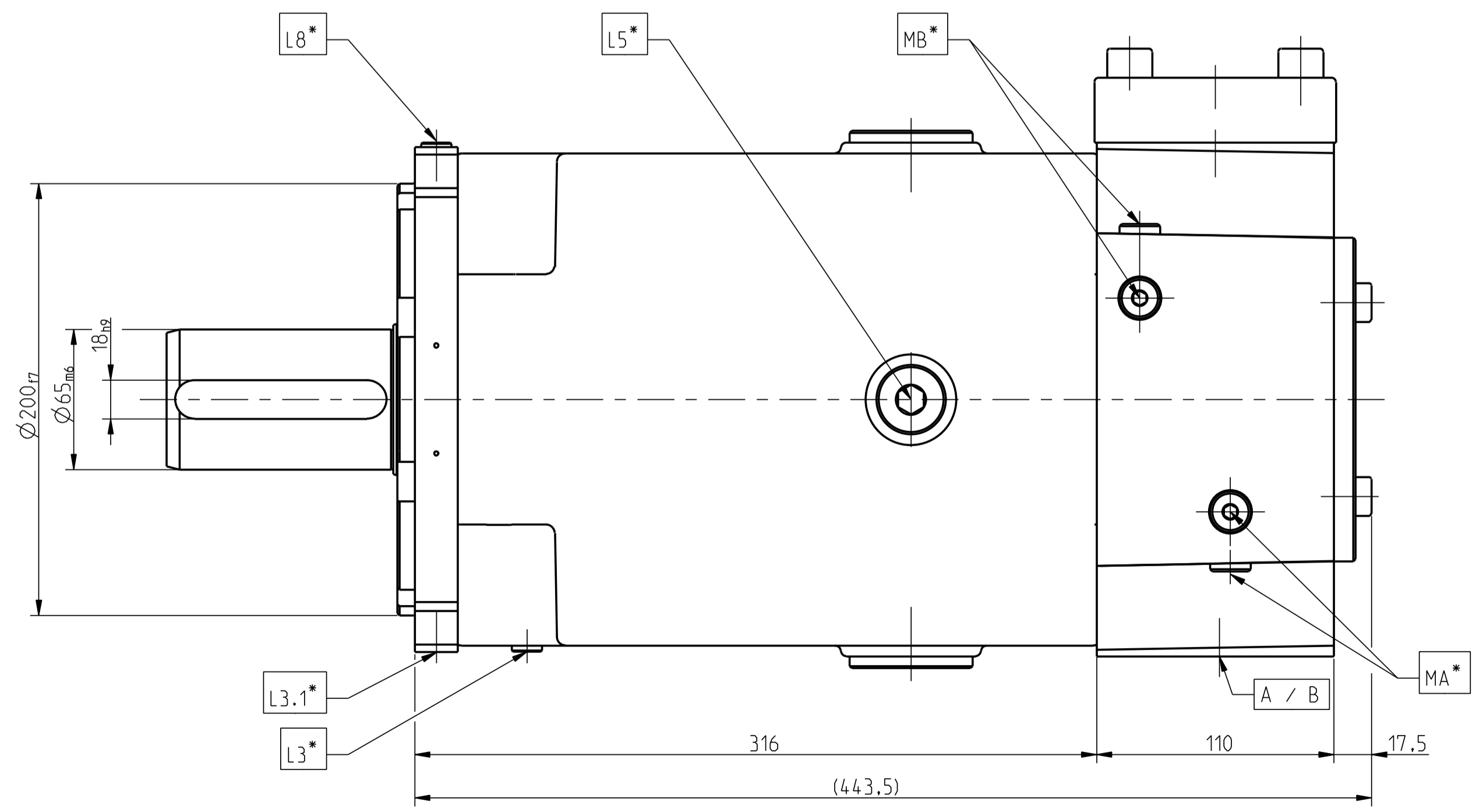
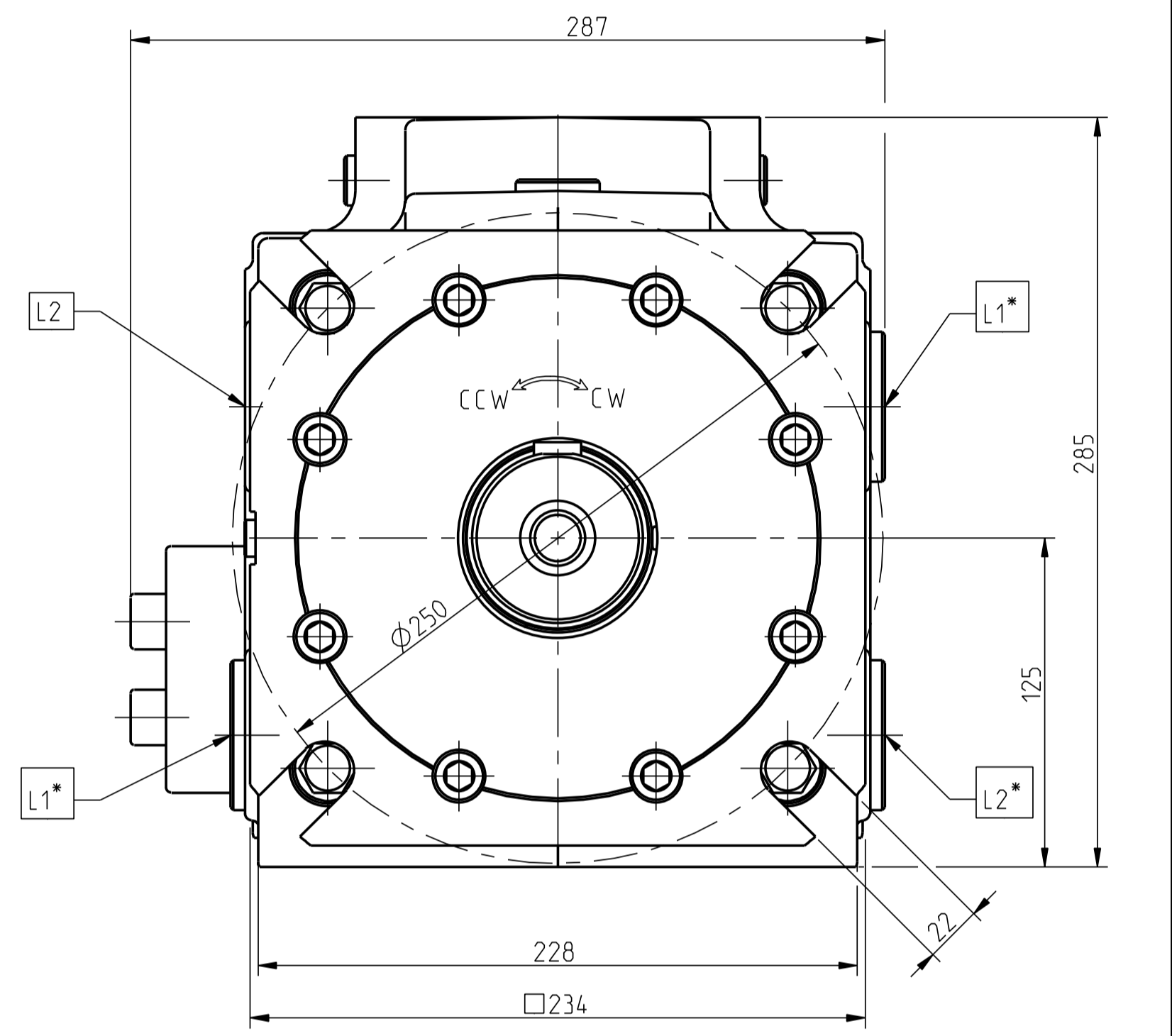
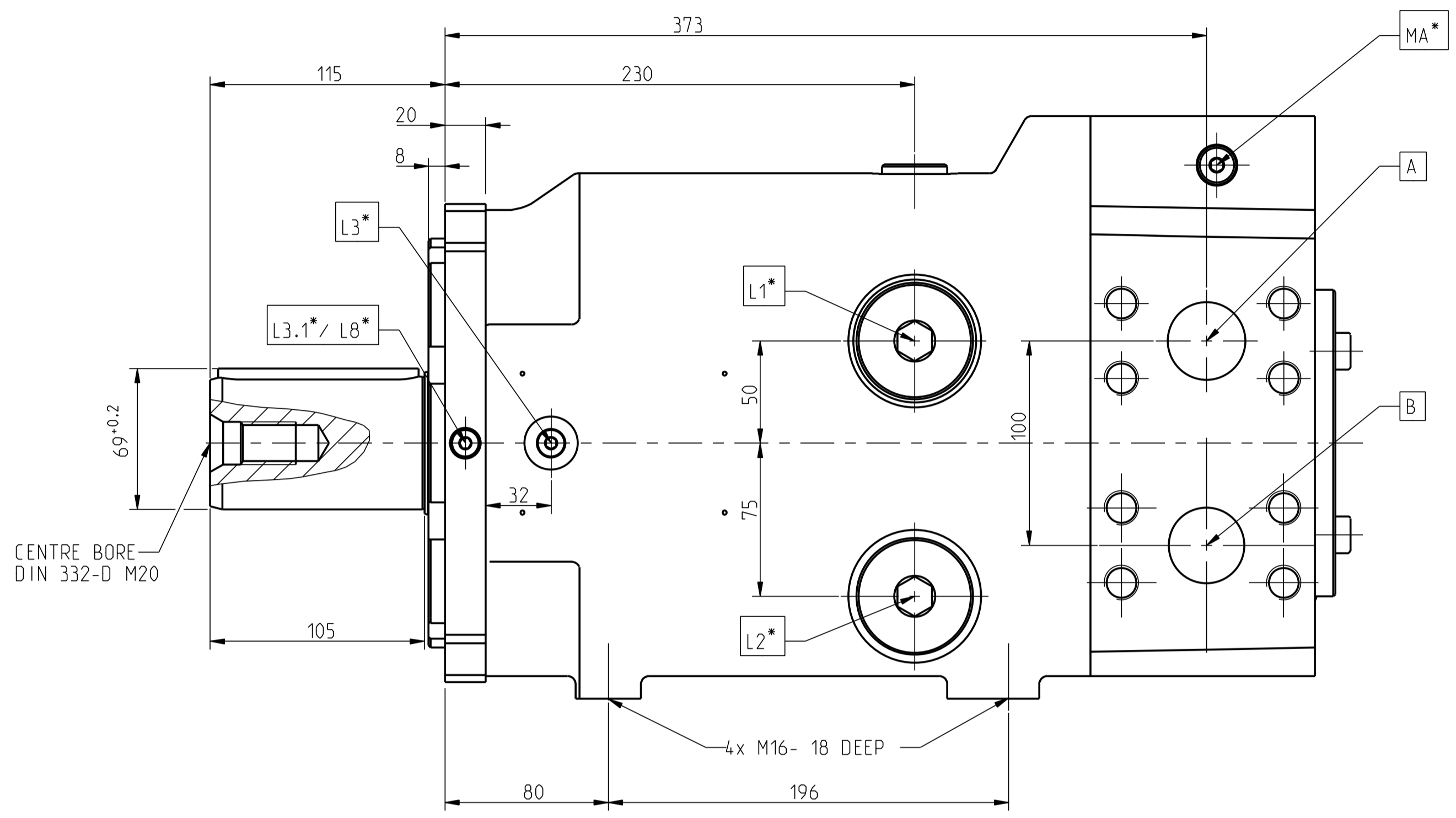
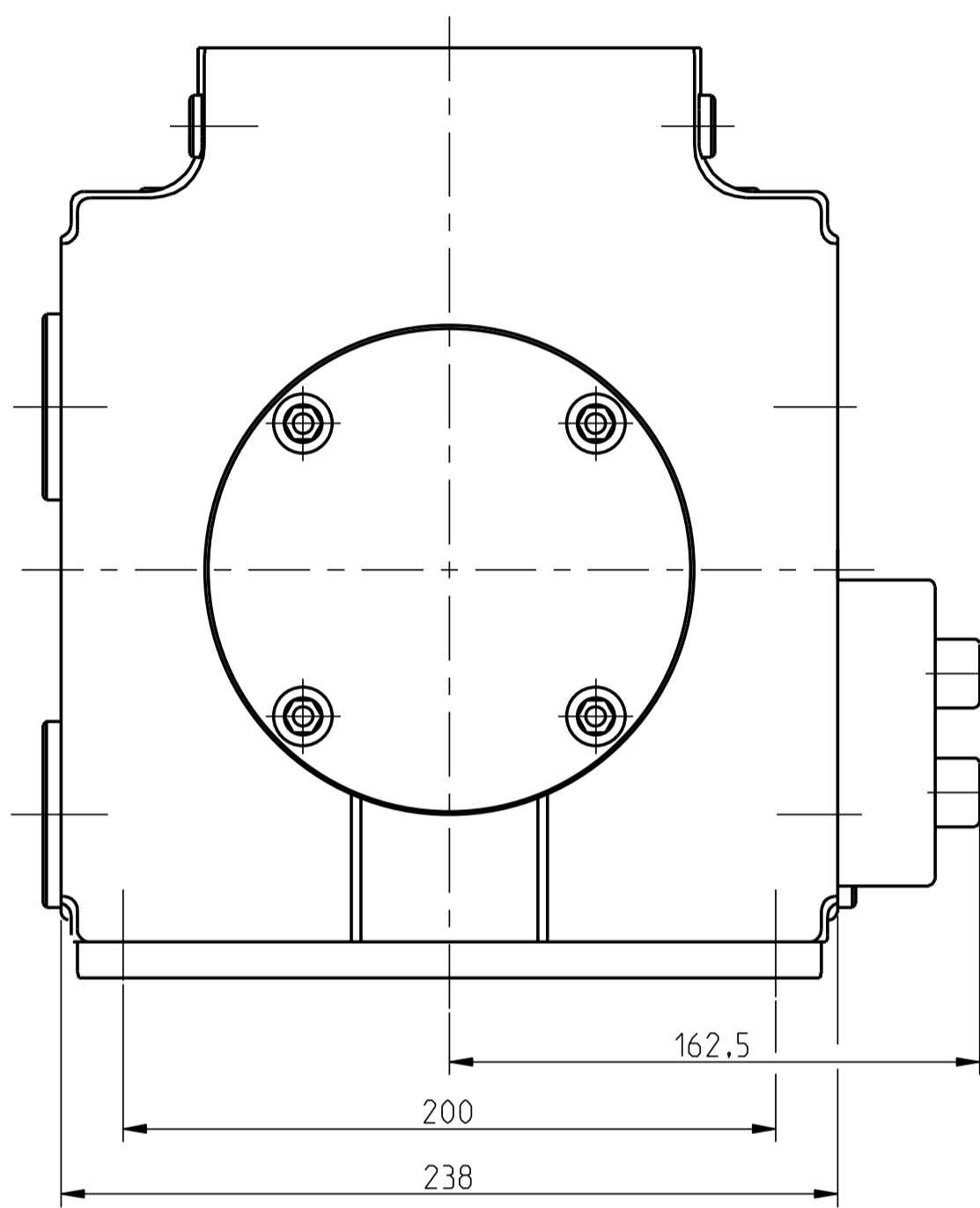


8 7 6 5 4 3 2 1

CAE DRAWING *** DO NOT CHANGE ORIGINAL				
REVISIONS				
ZONE	LTR	DESCRIPTION	DATE	APPROVED
	A	ENGINEERING RELEASE	2011-03-28	J.Vollberg



- [A] SYSTEM PRESSURE PORT SAE 1 1/2" - 6000 PSI
- [B] SYSTEM PRESSURE PORT SAE 1 1/2" - 6000 PSI
- [L1] DRAIN PORT G 1 5/8"-12 UNF-2B (ACCORDING TO MOUNTING POSITION USE UPPER PORT)
- [L2] DRAIN PORT G 1 1/4" (ACCORDING TO MOUNTING POSITION USE UPPER PORT)
- [L3] VENTILATION PORT FOR VERTICAL MOUNTING G 3/8" (SHAFT UPWARDS)
- [L3.1] PORT G 1/8"
- [L5] OIL FILLING PLUG G 1 1/16"-12 UNF-2B
- [L8] AIR BLEEDING PORT G 1/4"
- [MA] GAUGE PORT SYSTEM PRESSURE G 1/4"
- [MB] GAUGE PORT SYSTEM PRESSURE G 1/4"
- [...] CONNECTION WITH PLUG

DIRECTION OF ROTATION	INPUT	OUTPUT
RIGHT HAND ROTATION	B	A
LEFT HAND ROTATION	A	B

THE REPRODUCTION, DISTRIBUTION, AND UTILIZATION OF THIS DOCUMENT, AS WELL AS THE COMMUNICATION OF ITS CONTENTS TO OTHERS WITHOUT EXPLICIT AUTHORIZATION IS PROHIBITED. OFFENDERS WILL BE HELD LIABLE FOR THE PAYMENT OF DAMAGES. ALL RIGHTS RESERVED IN THE EVENT OF THE GRANT OF A PATENT, UTILITY MODEL, OR DESIGN. (PER ISO 16016)

REF: MFSB1608/HC806173000601

DWN: R.Kundu 2011-03-28
 ENR: J.Vollberg 2011-03-28
 PROD:

HEAT TREATMENT: FUNDAMENTAL TOLERANCING PRINCIPLE PER ISO 8015
 GENERAL TOLERANCES OF MACHINED LINEAR AND ANGULAR DIMENSIONS AND GENERAL GEOMETRICAL TOLERANCES PER ISO 2768-M

COATING/PATING: GENERAL DIMENSIONAL AND GEOMETRICAL TOLERANCES AND MACHINING ALLOWANCES FOR CASTINGS PER ISO 8062 CLASS CT9

ALL TECHNICAL DATA DISCLOSED HEREIN IS THE PROPERTY OF DANFOSSE INCORPORATED AND IS NOT TO BE USED FOR MANUFACTURE, PROCUREMENT OR DISCLOSURE TO OTHERS WITHOUT PERMISSION BY THE OWNER.

Danfoss

TITLE: INSTALLATION OF MFW S-360... WITHOUT CONTROL

SIZE: A I
 DWG. NO.: HC 056173000601
 SCALE: 1:2
 WEIGHT: -
 SHEET: 1 OF 1

8 7 6 5 4 3 2 1