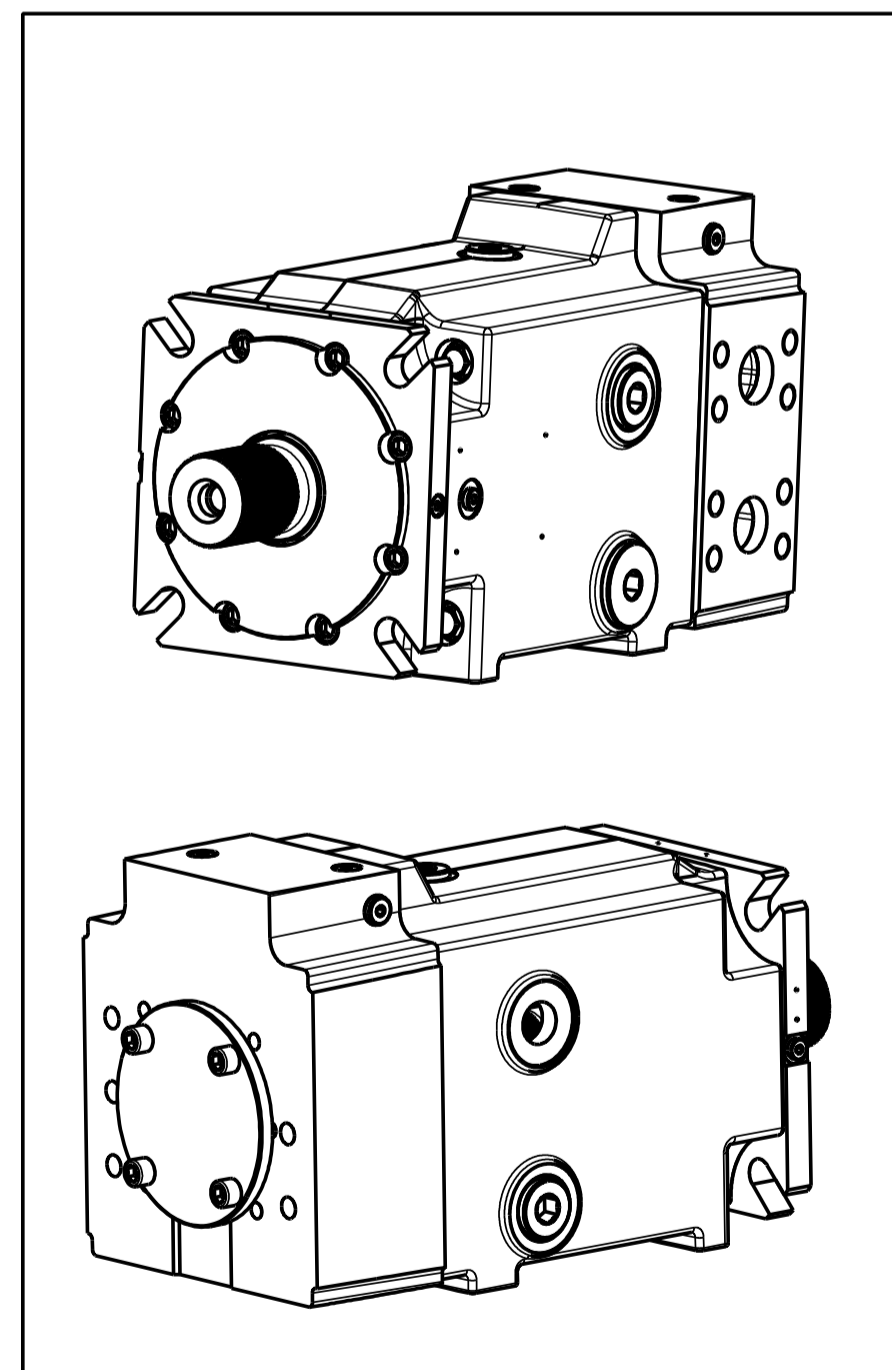
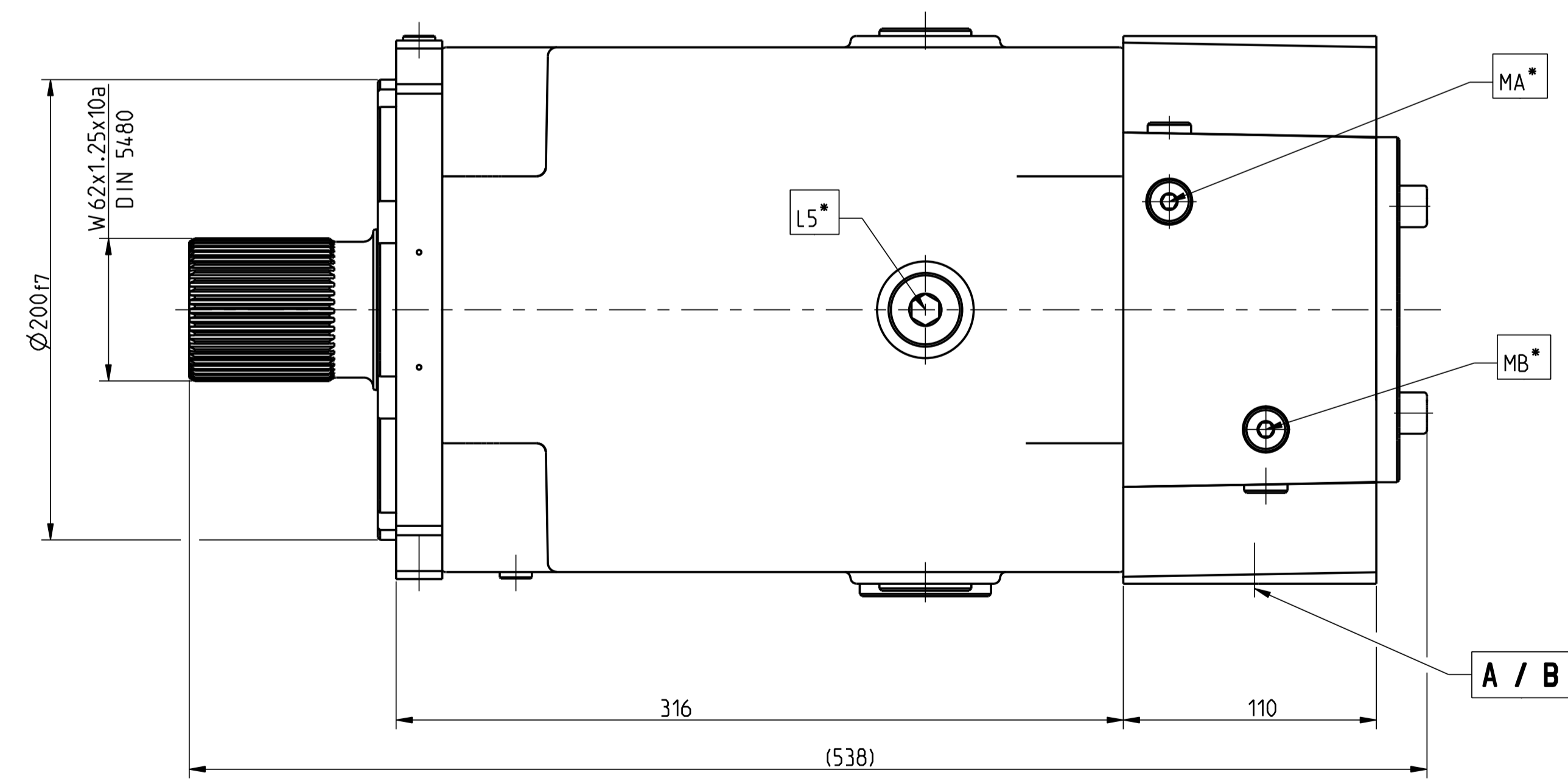
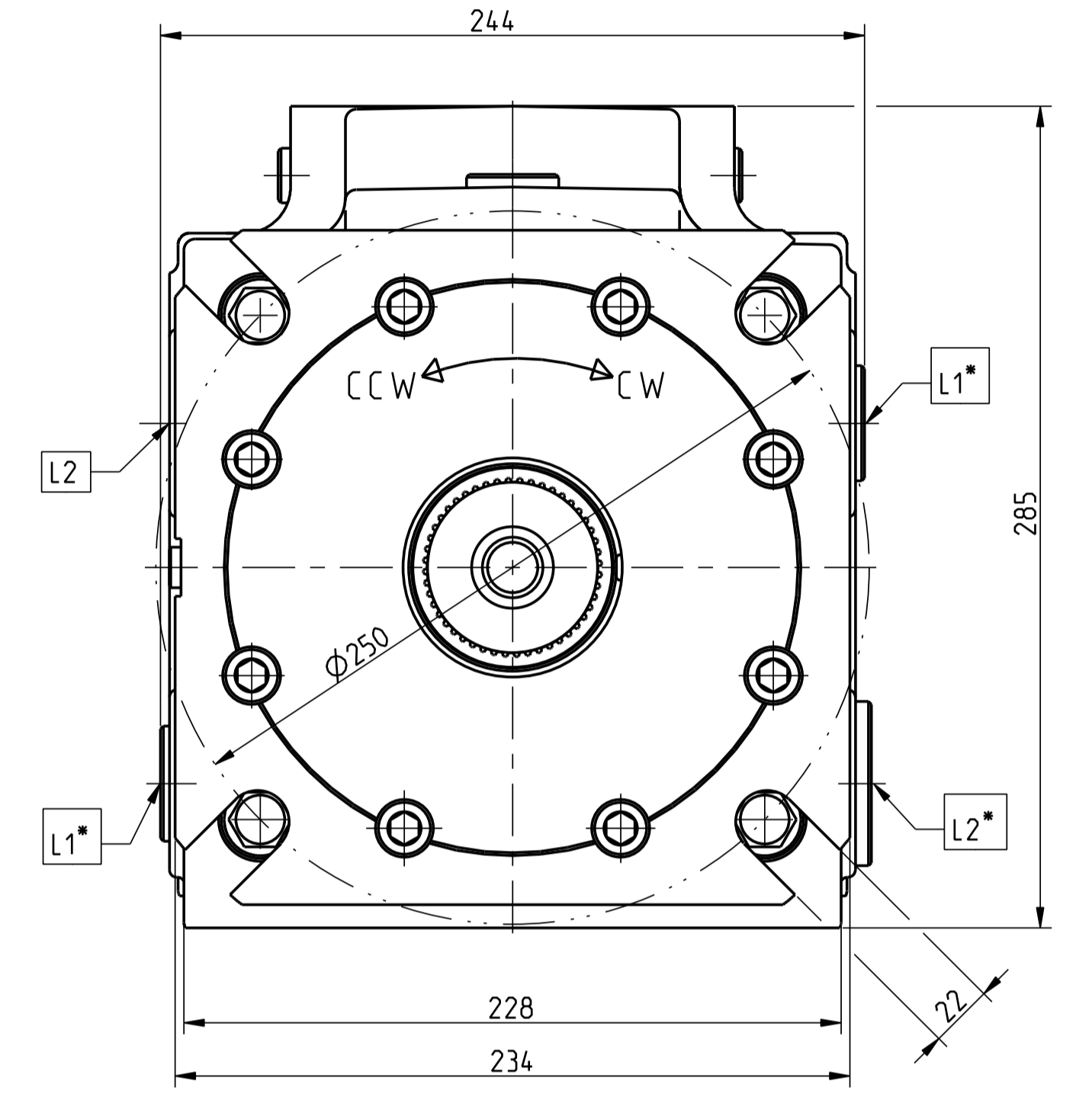
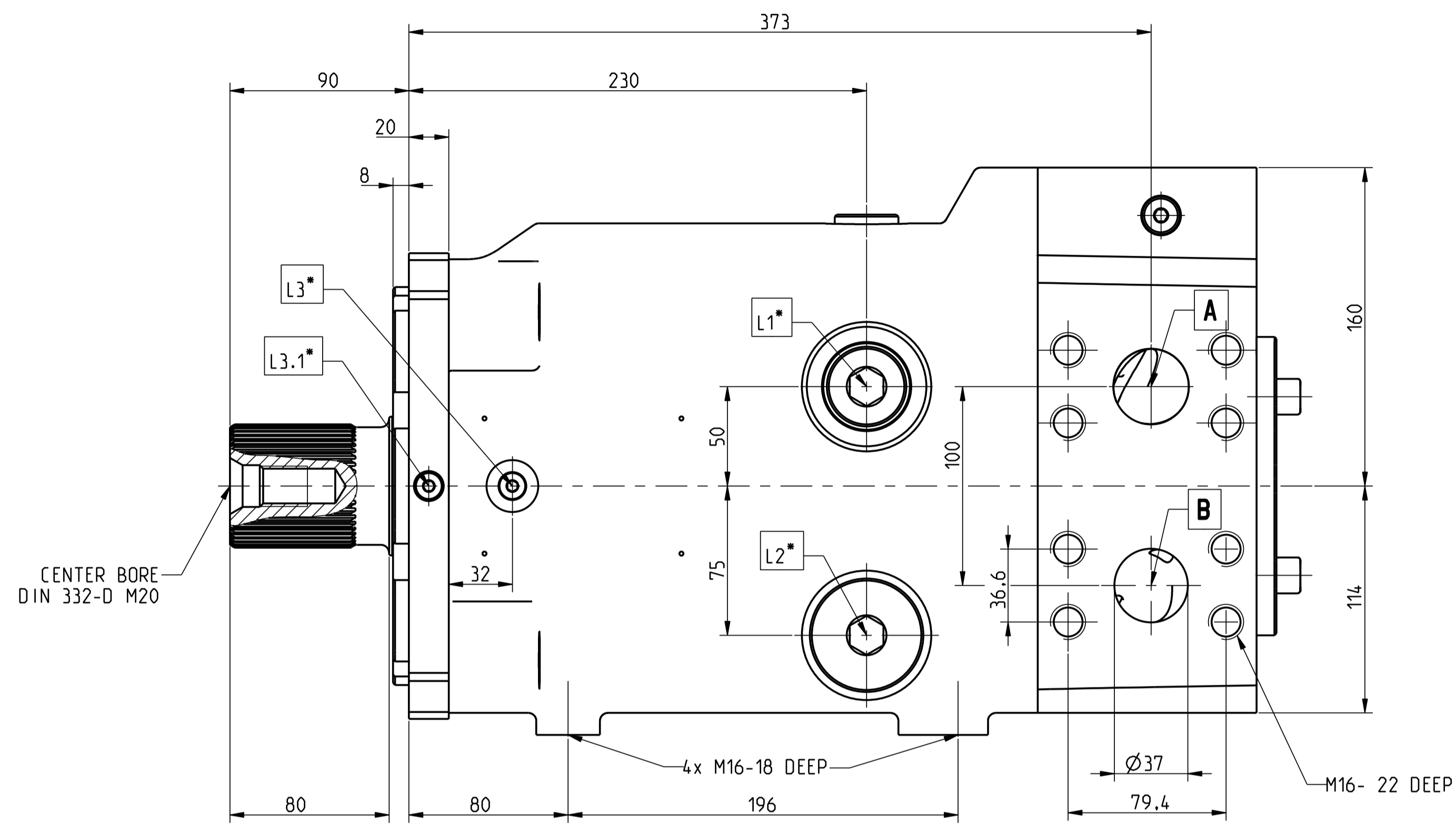
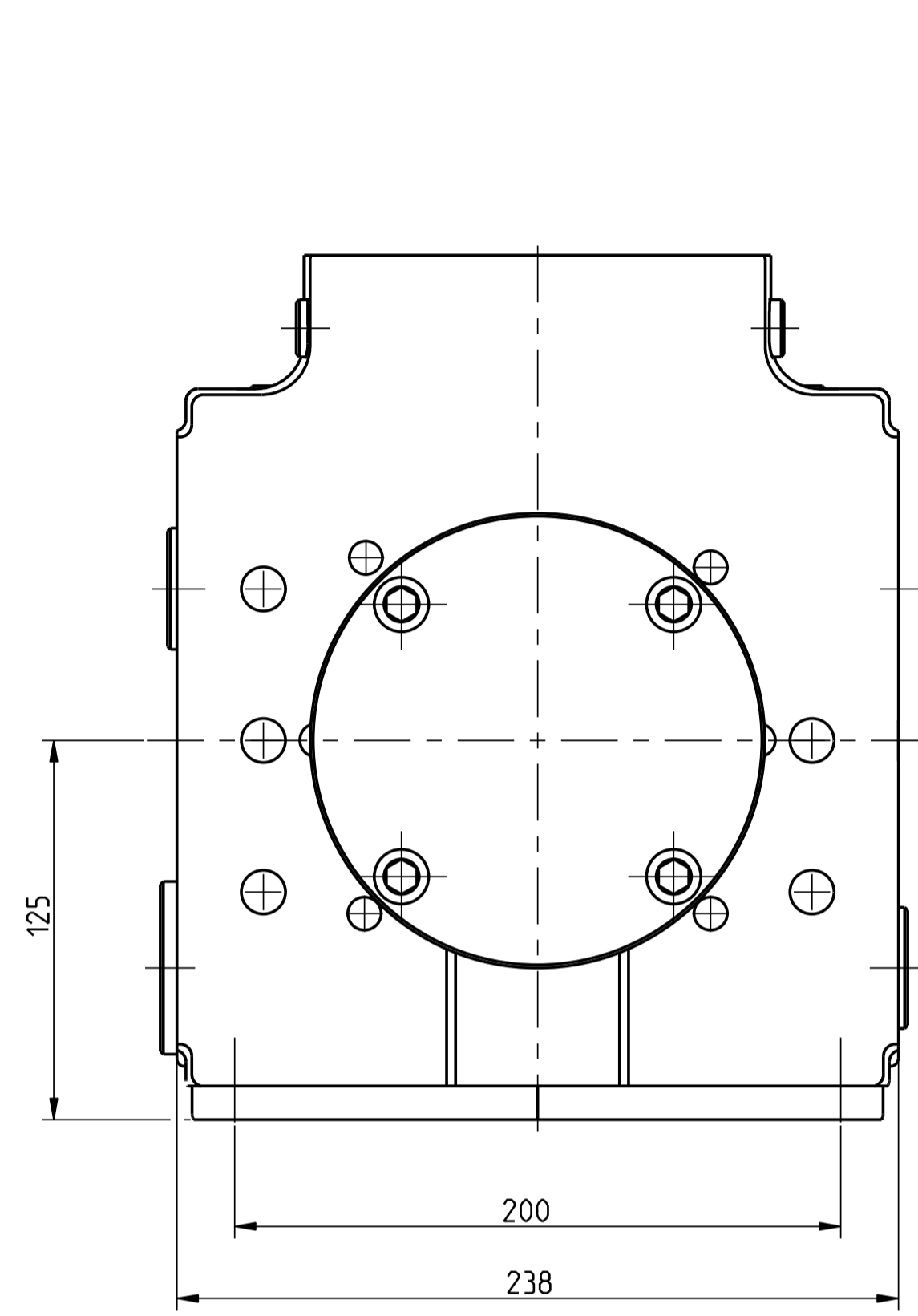


CAE DRAWING \*\*\* DO NOT CHANGE ORIGINAL

REVISIONS				
ZONE	LTR	DESCRIPTION	DATE	APPROVED
	A	ENGINEERING RELEASE	2011-07-13	J.Vollberg



- A** SYSTEM PRESSURE PORT SAE 1 1/2", 6000 PSI
- B** SYSTEM PRESSURE PORT SAE 1 1/2", 6000 PSI
- L1** DRAIN PORT 1 5/8"-12 UNF-2B (ACCORDING TO MOUNTING POSITION USE UPPER PORT)
- L2** DRAIN PORT G 1 1/4" (ACCORDING TO MOUNTING POSITION USE UPPER PORT)
- L3** VENTILATION PORT FOR VERTICAL MOUNTING G 3/8" (SHAFT UPWARD)
- L3.1** PORT G 1/8"
- L5** OIL FILLING PLUG 1 1/16"-12 UNF-2B
- MA** GAUGE PORT OF CASE PRESSURE G 1/4"
- MB** GAUGE PORT OF CASE PRESSURE G 1/4"
- ...\*** CONNECTION WITH PLUG

DIRECTION OF ROTATION	INPUT	OUTPUT
RIGHT HAND ROTATION	B	A
LEFT HAND ROTATION	A	B

MFW S-250M07B001R02SV0A000000A00000000000010

FIRST ANGLE PROJECTION	REF. MPS82648 / HC806073050301	REL. HC
DWN. I.Hangad 2011-07-13		
CHK. J.Vollberg 2011-07-13		
PROD.		
HEAT TREATMENT	FUNDAMENTAL TOLERANCING PRINCIPLE PER ISO 8015 GENERAL TOLERANCES OF MACHINED LINEAR AND ANGULAR DIMENSIONS AND GENERAL GEOMETRICAL TOLERANCES PER ISO 2768-M	TITLE
COATING/PATING	GENERAL DIMENSIONAL AND GEOMETRICAL TOLERANCES AND MACHINING ALLOWANCES FOR CASTINGS PER ISO 8002 CLASS L19	INSTALLATION OF MFW S-250
ALL TECHNICAL DATA DISCLOSED HEREIN IS THE PROPERTY OF DANFOSS INCORPORATED AND IS NOT TO BE USED FOR MANUFACTURE, PROCUREMENT OR DISCLOSURE TO OTHERS WITHOUT PERMISSION BY THE OWNER.		SIZE A1
SCALE 1:2	WEIGHT -	REV. LETTER A
		SHEET 1 OF 1

HC056073050301 SH 1 REV A