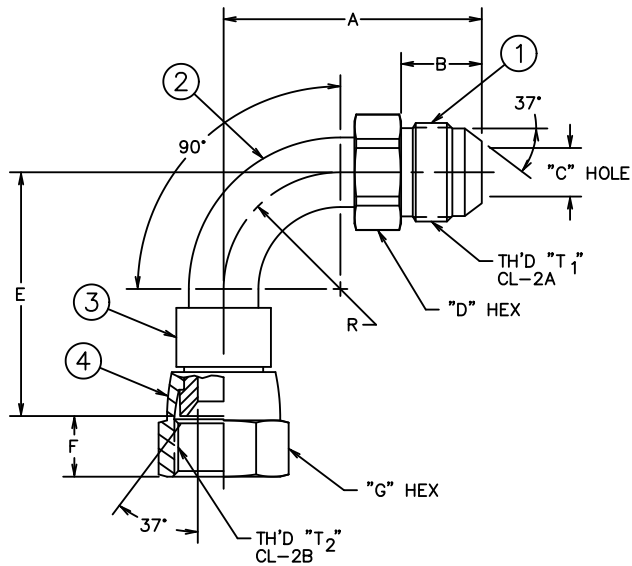


AEROQUIP PART NUMBER	TH'D "T ₁ "	TH'D "T ₂ "	A ±.062	B REF	C REF	D REF	E ±.062	F REF	G REF	R REF	PROCESS PER NOTE
FF5163-0808S	3/4-16	3/4-16	2.157	.66	.37	.81	1.866	.44	.88	.75	▲
FF5163-1212S	1 1/16-12	1 1/16-12	2.807	.86	.56	1.12	2.351	.57	1.25	1.25	▲
FF5163-1616S	1 5/16-12	1 5/16-12	3.411	.91	.76	1.38	3.040	.60	1.50	1.50	▲
FF5163-2020S	1 5/8-12	1 5/8-12	3.708	.96	.94	1.69	3.400	.64	2.00	1.75	▲
FF5163-2424S	1 7/8-12	1 7/8-12	4.333	1.08	1.12	2.00	3.950	.74	2.25	2.00	▲

REVISIONS			
REV.	DESCRIPTION	DATE	APPROVED
K	REDRAWN ON CAD - LAST REV. "J" (1) .37 WAS .39, .56 WAS .61, .76 WAS .85, .94 WAS 1.08 & 1.12 WAS 1.31	4-6-92	EN-F12966 ER-F12966
L	(1) FINISH WAS "ZINC PLATE PER ACES 16P47".	2018-12-24 AKG/VRN	CO-0180039



FF5163-2424S	FF1505-2424S	FC1109-24-501S	FC2708-2424S	210204-24S	
FF5163-2020S	FF1505-2020S	FC1109-20-501S	FC2708-2020S	210204-20S	
FF5163-1616S	FF1505-1616S	FC1109-16-501S	FC2708-1616S	210204-16S	
FF5163-1212S	FF1505-1212S	FC1109-12-001S	FC2708-1212S	234-210204-12	
FF5163-0808S	FF1505-0808S	FC1109-08-001S	FC2708-0808S	234-210204-8	
AEROQUIP PART NUMBER	① ADAPTER	② ELBOW	③ SHOULDER	④ NUT	

LIST OF MATERIALS

ITEM NO.	MATERIAL	DRAWN R.D.GARRETT	CHECKED R.D.GARRETT	APPROVED R.D.GARRETT	RELEASE DATE 1992-04-06	EN-F12966	ER-F12966	THIRD ANGLE PROJECTION	SIZE A2	DRAWING NUMBER FF5163	REV L		
1	STEEL												
2	STEEL												
3	STEEL												
4	STEEL												
		FLUID CONVEYANCE DIVISION		DRAWING TITLE ELBOW ASSEMBLY 90°, SAE 37° MALE FLARE TO SAE 37° SWIVEL		SCALE NONE		DIST U		CAGE CODE 01276		SHEET 1	

2. PROCESS AS FOLLOWS:
(a) BRAZE PER ACES 67P2.
(b) ZINC PLATE PER ES 2751DB.
(c) ASSEMBLE NUT. ①

1. PROCESS AS FOLLOWS:
(a) BRAZE PER ACES 67P13.
(b) ZINC PLATE PER ES 2751DB.
(c) ASSEMBLE NUT. ①

THE REPRODUCTION, DISTRIBUTION AND UTILIZATION OF THIS DOCUMENT AS WELL AS THE COMMUNICATION OF ITS CONTENTS TO OTHERS WITHOUT EXPLICIT AUTHORIZATION IS PROHIBITED. OFFENDERS WILL BE HELD LIABLE FOR THE PAYMENT OF DAMAGES. ALL RIGHT RESERVED IN THE EVENT OF THE GRANT OF A PATENT, UTILITY MODEL OR DESIGN. (PER ISO 16016)