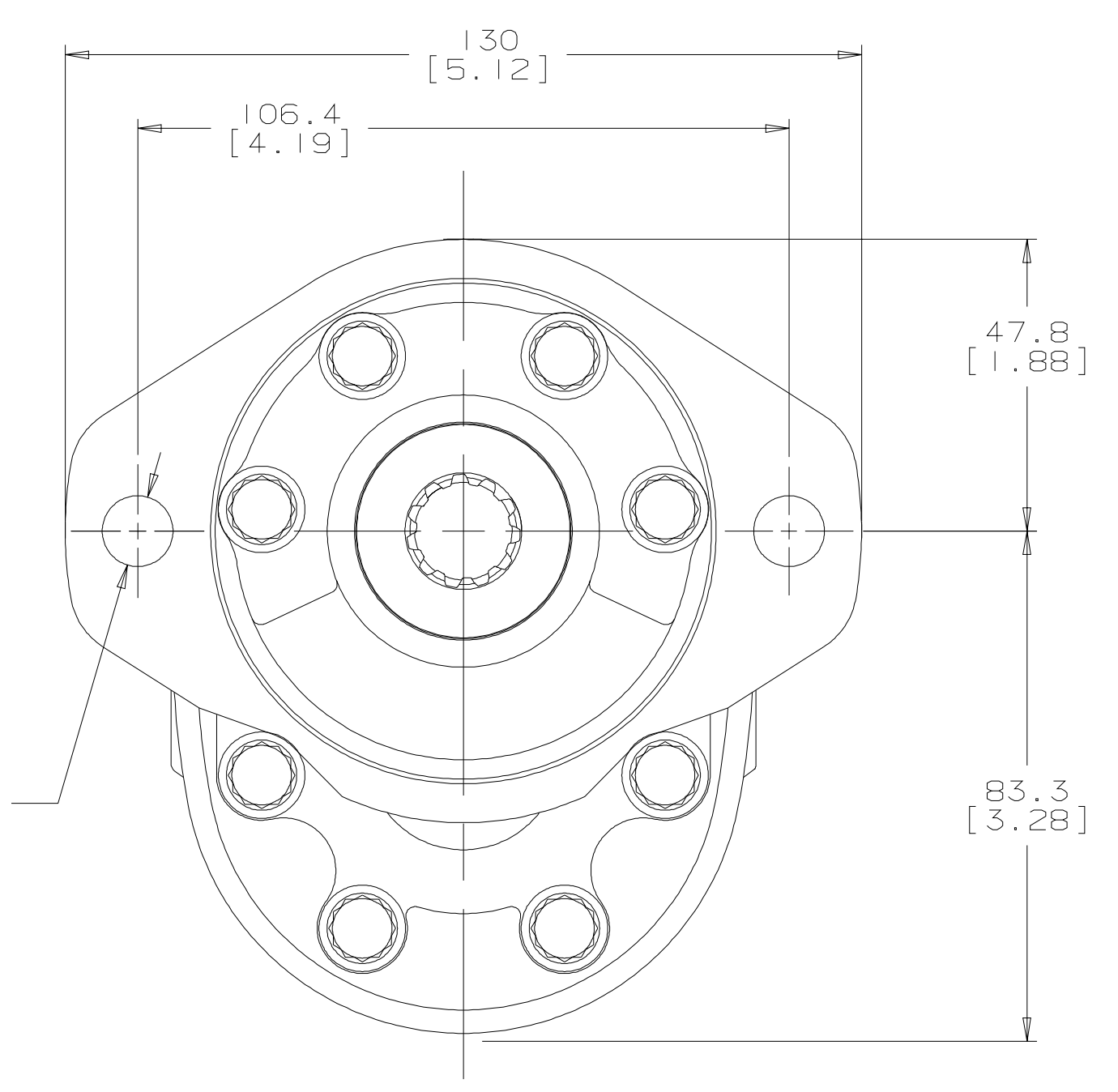
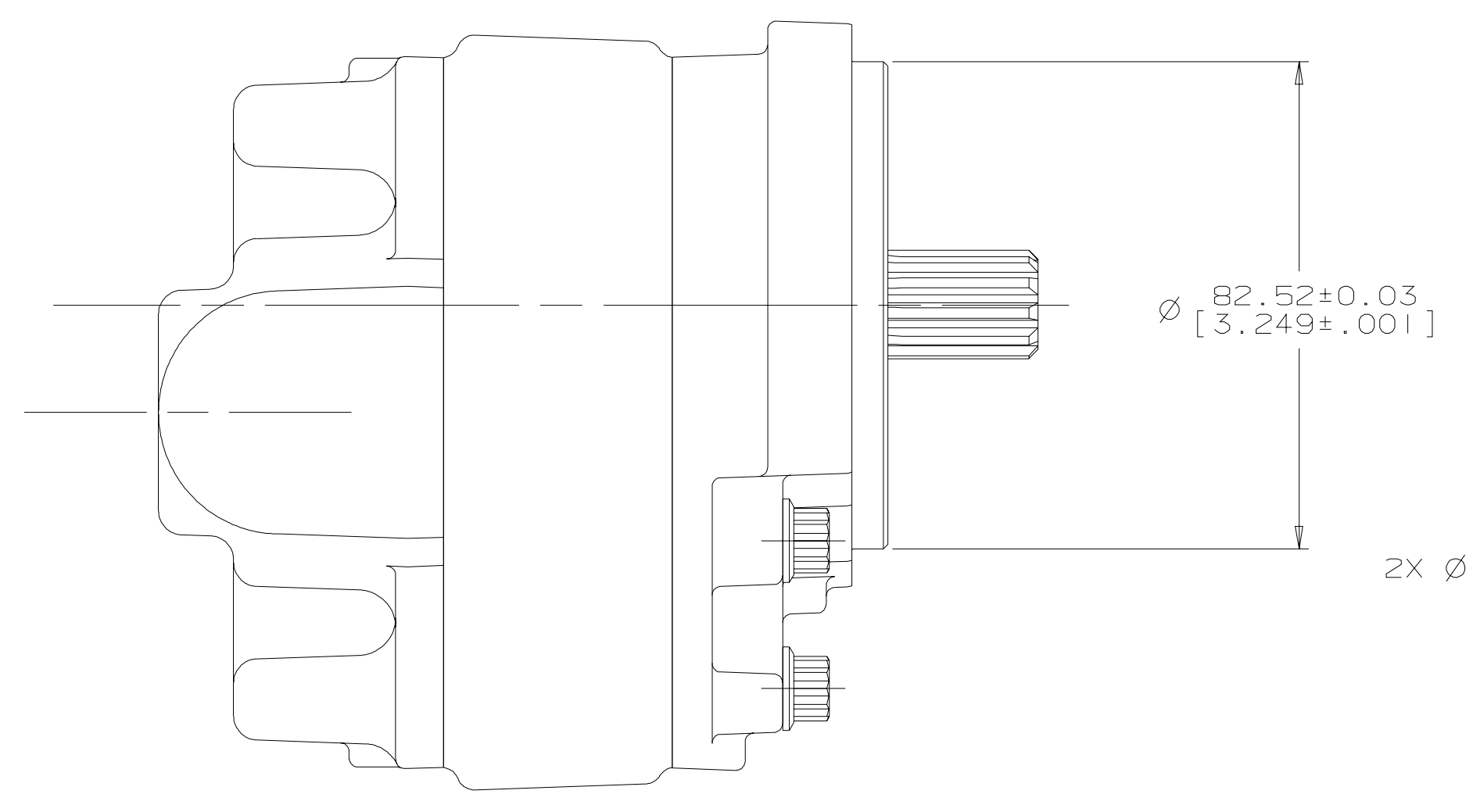
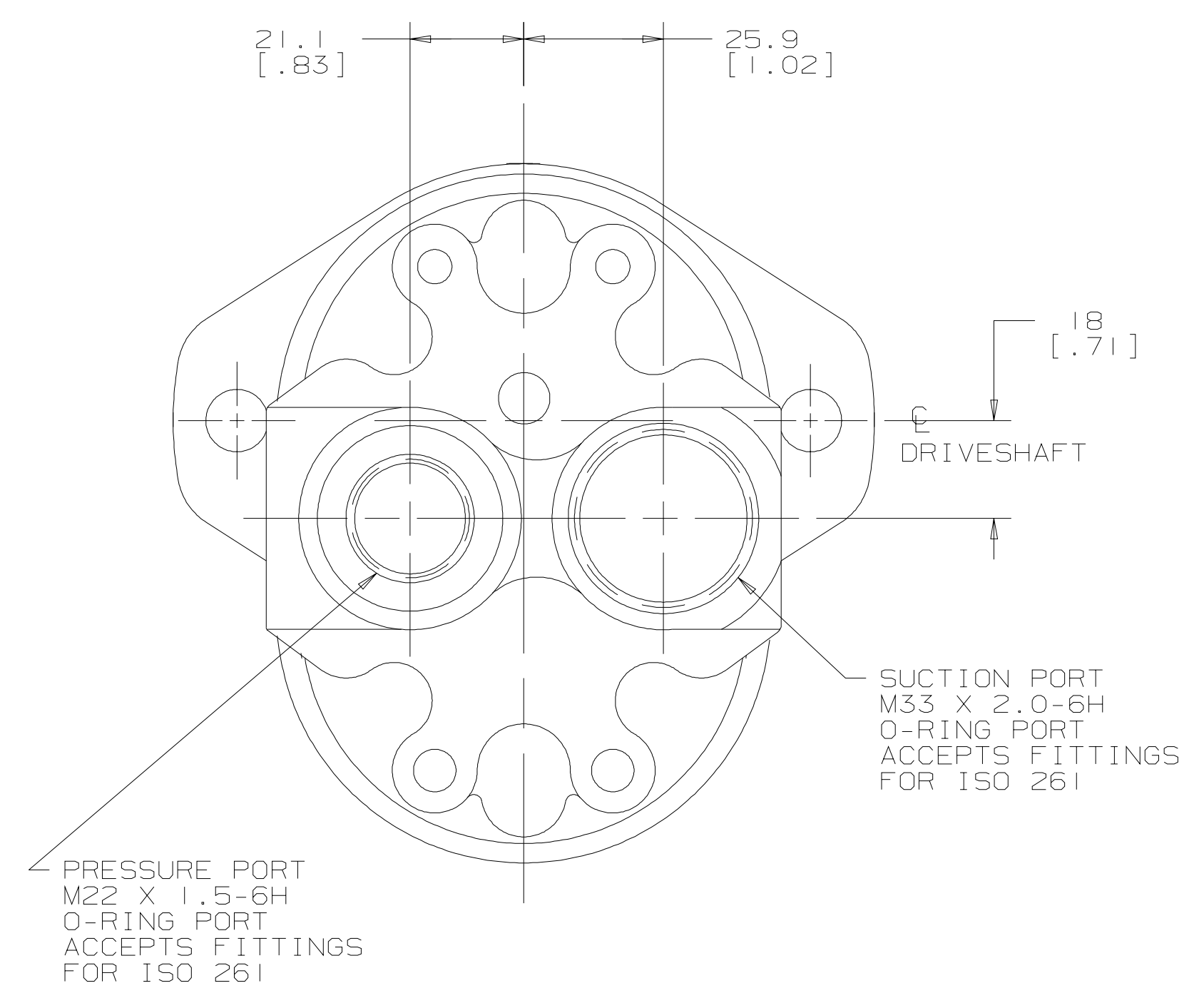
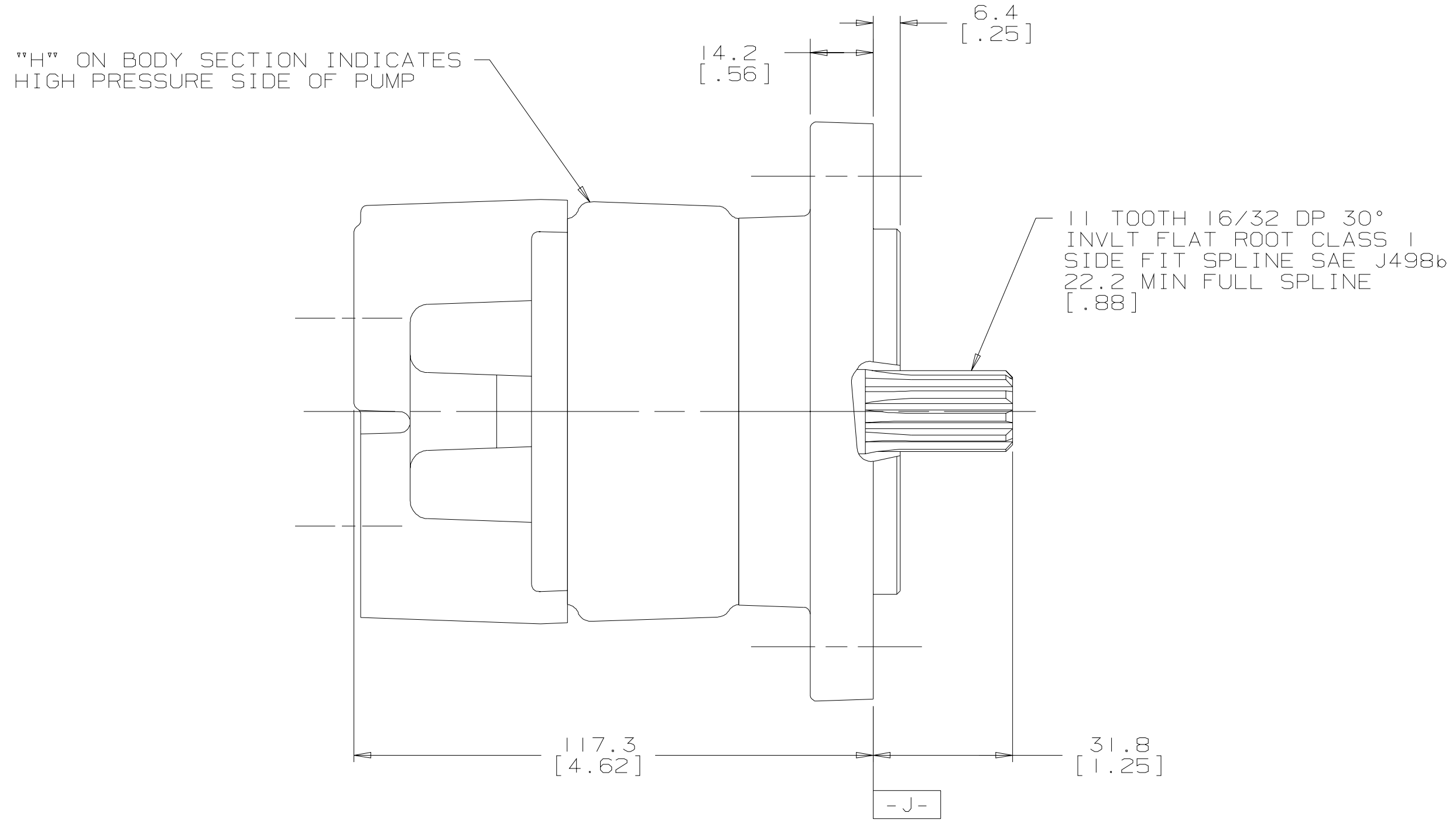


REV	DESCRIPTION	BY	CHK	DATE	ECN
A	ENGINEERING RELEASE	MLL		03/10/95	MI 3220
B	-1) (6D) ADDED NOTE "H" ON BODY SECTION... -2) DELETED BOLT MARKINGS -3) UPDATED BACKPLATE	WSM	WSM	11/27/98	31483



UNLESS OTHERWISE SPECIFIED ALL DIMENSIONS ARE IN
 INCHES MILLIMETERS

TOLERANCES
 .x ±
 .xx ±REF
 .xxx ±ONLY
 < ±

UNSPECIFIED RADI ARE

UNSPECIFIED DRAFT ANGLES ARE

DRAWING FORMAT
 CAD MANUAL

DRAWING BASED ON ANSI Y14.5M-1982

THE REPRODUCTION, DISTRIBUTION, AND UTILIZATION OF THIS DOCUMENT, AS WELL AS THE COMMUNICATION OF ITS CONTENTS TO OTHERS WITHOUT EXPLICIT AUTHORIZATION IS PROHIBITED. OFFENDERS WILL BE HELD LIABLE FOR THE PAYMENT OF DAMAGES. ALL RIGHTS RESERVED IN THE EVENT OF THE GRANT OF A PATENT, UTILITY MODEL, OR DESIGN. (PER ISO 16016)

Danfoss

DRAWN BY/DATE MLL 04/18/95 MATERIAL/HEAT TREAT
 CHECKED BY/DATE
 ENGRG BY/DATE
 METALLURGY BY/DATE

TITLE
 GEAR PUMP INSTALLATION

NUMBER
 C26011-RAA

SCALE 1/1 SHEET 1 OF 1