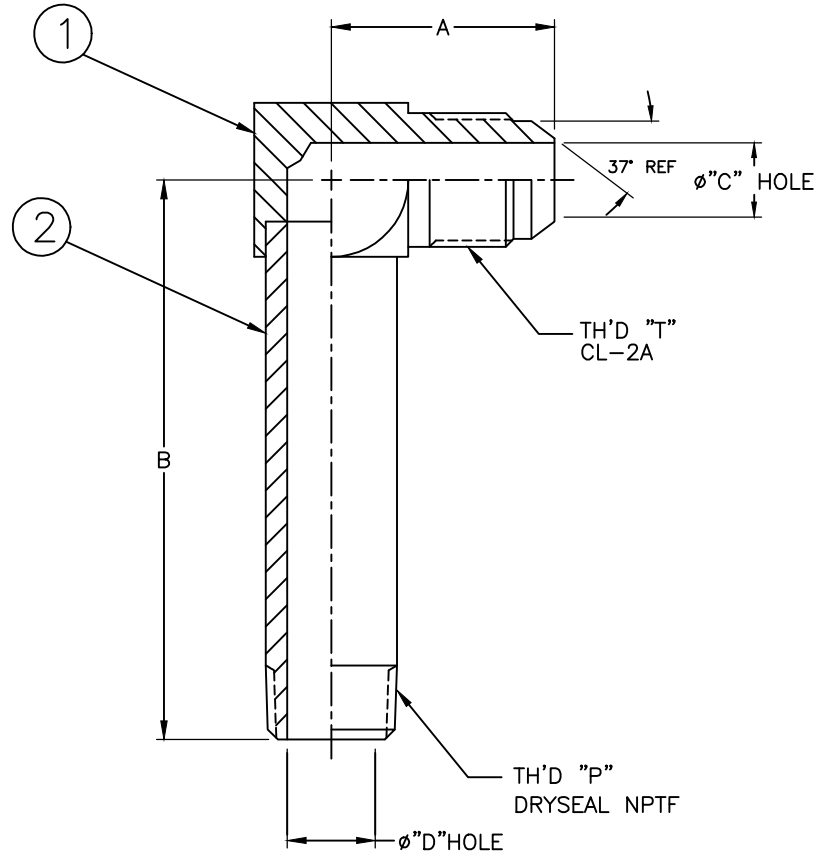


PART NUMBER	TH'D "P"	TH'D "T"	A ±0.8 [±.03]	B ±0.8 [±.03]	C REF	D REF
202414-4-4S	1/4-18	7/16-20	24.6 [.97]	75.9 [2.99]	4.3 [.17]	7.1 [.28]
202414-4-6S	1/4-18	9/16-18	26.9 [1.06]	77.7 [3.06]	7.6 [.30]	7.1 [.28]
202414-6-6S	3/8-18	9/16-18	26.9 [1.06]	29.2 [3.71]	7.6 [.30]	10.4 [.41]

REVISIONS			
REV	DESCRIPTION	DATE	APPROVED
V	REDRAWN. UPDATED TO EATON FORMAT & DIMENSION STYLE. 1) REMOVED PART #202414-2-4S & #202414-2-5S.	2015-12-02 RZH/VSP	0117031-ECO
W	1) TH'D "P" WAS 3/8-18	2022-06-28 SKD	CO-0224516 A-2022/8399



METRIC

2. PROCESS AS FOLLOWS:
 (a) BRAZE PER ACES 67P2.
 (b) ZINC PLATE PER ACES 16P47.

1. DIMENSIONS ARE IN MILLIMETERS [INCH].

202414-6-6S	72439-6-12S	73435-6S		
202414-4-6S	72439-6-9S	73435-4S		
202414-4-4S	72439-4-9S	73435-4S		
PART NUMBER	① ADAPTER BODY	② ADAPTER SPUD		

LIST OF MATERIALS

ITEM NO.	MATERIAL	FLUID CONVEYANCE DIVISION MAUMEE, OHIO U.S.A.		DRAWN R. HODEKAR	
1	STEEL			CHECKED V. PATIL	
2	STEEL			APPROVED Y. KULKARNI	
		CAGE CODE 01276		RELEASE DATE 2015-12-02	
		THIRD ANGLE PROJECTION		DRAWING INTERPRETATION PER ES 10	
		DIST U		DRAWING TITLE	
		SIZE A2		ADAPTER	
		SCALE NONE		SAE 37° FLARE-90° MALE	
		SHEET 1 OF 3		EXTRA LONG LONG ELBOW	
				DRAWING NUMBER	
				202414-S	
				REV	
				W	