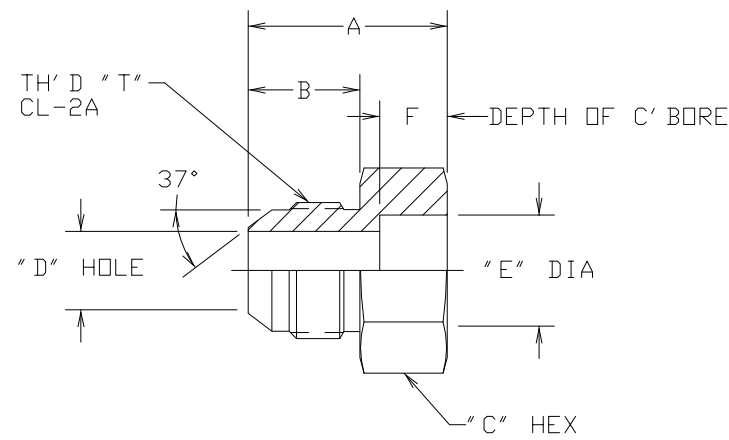


PART NUMBER	I. P. S. SIZE	TH' D " T "	A REF	B REF	C REF	D REF	E ±.005	F MIN
202232-1/4-8S	1/4	3/4-16	1.20	.66	1.12	.39	.560	.375
202232-1/2-12S	1/2	1 1/16-12	1.54	.86	1.38	.61	.860	.500
202232-1-20S	1	1 5/8-12	1.81	.96	1.75	1.08	1.335	.630
202232-1 1/2-24S	1 1/2	1 7/8-12	1.95	1.08	2.38	1.31	1.920	.690

REVISIONS			
REV.	DESCRIPTION	DATE	APPROVED
D	REDRAWN - LAST REV. "C" UPDATED DIMENSIONS TO AGREE WITH DETAIL DRAWINGS	12-28-93	EN-F14300 DAI-17511
E	NEW TITLE BLOCK; CAGE CODE WAS 01276. RPLCD W/ CURRENT DISCLAIMER. CLEANED DATA XFER TO AUTOCAD.	3-3-95	EN-M00025 ER-AQM00025



1. MATERIAL: STEEL.

THE REPRODUCTION, DISTRIBUTION AND UTILIZATION OF THIS DOCUMENT AS WELL AS THE COMMUNICATION OF ITS CONTENTS TO OTHER WITHOUT EXPLICIT AUTHORIZATION IS PROHIBITED. OFFENDERS WILL BE HELD LIABLE FOR THE PAYMENT OF DAMAGES. ALL RIGHT RESERVED IN THE EVENT OF THE GRANT OF A PATENT, UTILITY MODEL OR DESIGN. (PER ISO 16016)

DRAWN T. WOJCIK	DATE 3-3-95	Danfoss FLUID CONVEYANCE DIVISION
CHECKED B. LINDER	DATE 3-3-95	
APPROVED S. MOORE	DATE 3-3-95	DRAWING TITLE
RELEASED EN-M00025	DATE 3-3-95	SAE 37° MALE FLARE TO SOCKET WELD PIPE, SCHEDULE 80
PROJECT NO. ER-AQM00025	APC NO.	SIZE (CAGE) CODE NO. DRAWING NUMBER
DESIGN APPROVED		C 1P322 202232-S
APPROVED	TU	SHEET

DWG. NO. 202232-S
 SH. E
 REV. E
 FILE190