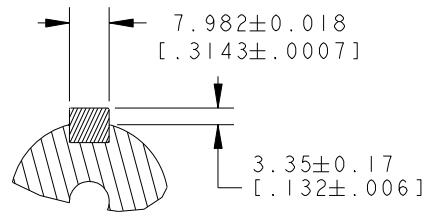
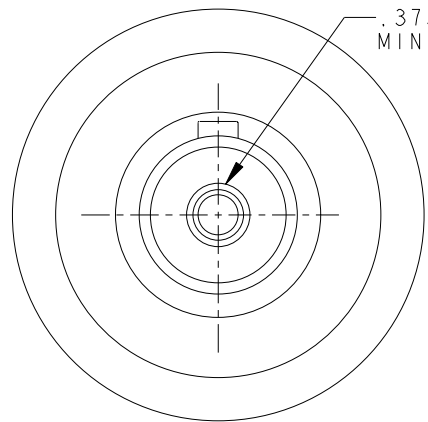
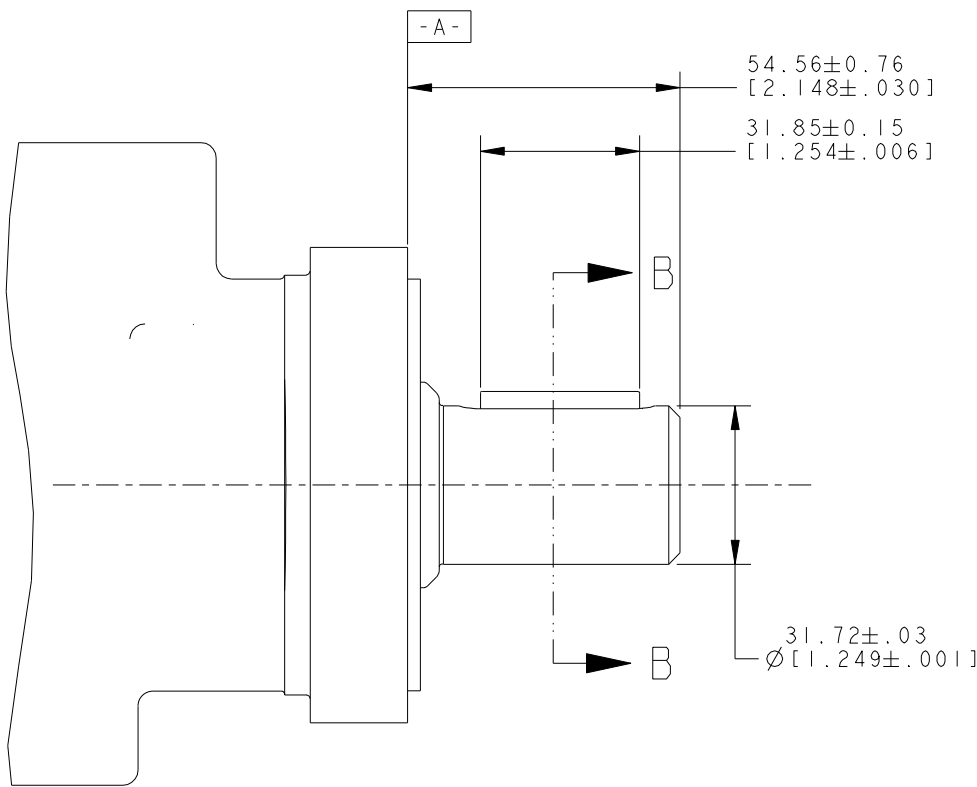


REV	DESCRIPTION	BY	CHK	DATE	ECN / MPS
A	RELEASE FOR SAMPLES AND ESTIMATES	AAK		10/10/06	M68384
B	ADDED 31.72±.03 [1.249±.001]	SSD		2-05-07	0002807
C	DIM 54.56±0.76 [2.148±.030] WAS 52.15±1.0 [2.053±.030]	PRM		5-22-07	0005999
D	ENGINEERING RELEASE	JSB		8-30-07	M70910
E	-1) REMOVED DIM 8.1±0.8 [.32±.03], -2) ADDED C OF C NOTE	HRK		03-05-09	ECR15672
F	-1) 31.85±0.15 [1.254±.006] WAS 31.8±0.8 [1.25±.03] -2) 7.982±0.018 [.3143±.0007] WAS 7.963±.013 [.3135±.0005]	AAB		02-05-10	M75974A



SECTION B - B

C S REVIEWED FOR CLASSIFICATION PER ESP-042

NOTE:
1 MOUNTING TYPE : AB
2 OUTPUT SHAFT : 07

UNLESS OTHERWISE SPECIFIED ALL DIMENSIONS ARE IN INCHES <input checked="" type="checkbox"/> MILLIMETERS (INCHES) <input type="checkbox"/>	DRAWING BASED ON ANSI Y14.5M-1982		
	TOLERANCES .X ± 0.1 .XX ± 0.01 .XXX ± 0.001 < ± 0.5°		
UNSPECIFIED RADII ARE: -	DRAWN AAK BY/DATE 11/10/2006 CHECKED NHB BY/DATE 11/10/2006	MATERIAL/HEAT TREAT -	
UNSPECIFIED DRAFT ANGLES ARE: °	ENGRG TIM BY/DATE 11/13/2006 METALLURGY - BY/DATE -	TITLE DELTA MOTOR SHAFT INSTALLATION	
B SIZE	THIRD ANGLE PROJECTION DO NOT SCALE	MICROINCHES <input checked="" type="checkbox"/> MICROMETERS (MICROINCHES) <input type="checkbox"/> ARITHMETICAL AVERAGE <input checked="" type="checkbox"/>	NUMBER A-2977-007 SCALE 1/1 SHEET 1 OF 1