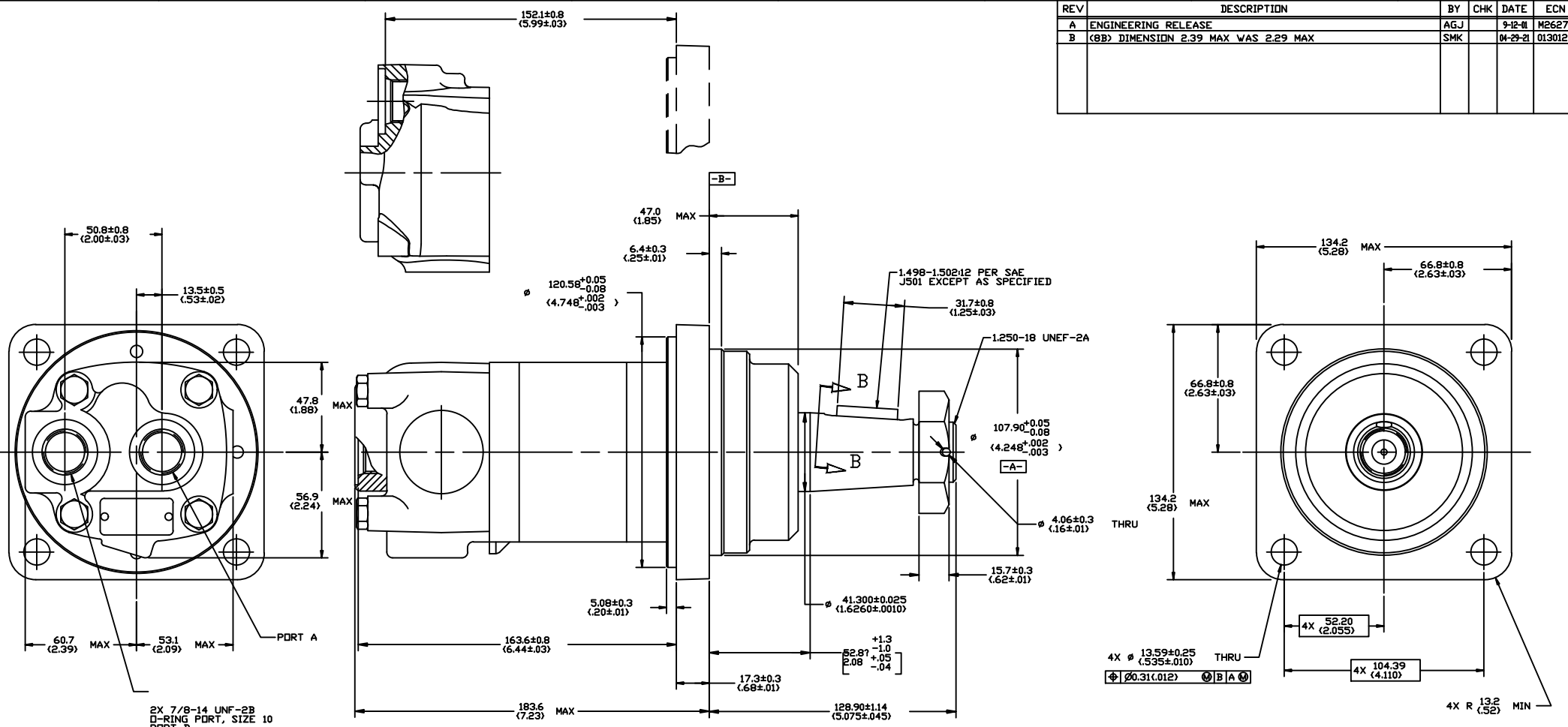
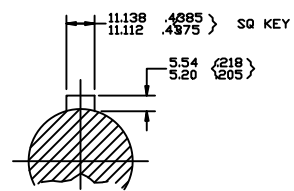
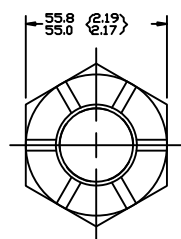


REV	DESCRIPTION	BY	CHK	DATE	ECN
A	ENGINEERING RELEASE	AGJ		9-12-01	M26277
B	(8B) DIMENSION 2.39 MAX WAS 2.29 MAX	SMK		04-29-21	0130124



2X 7/8-14 UNF-2B
O-RING PORT, SIZE 10
PORT B



SECTION B-B

- NOTE
- ROTATION: STANDARD: WHEN FACING SHAFT END OF MOTOR, SHAFT TO ROTATE; CLOCKWISE WHEN PORT "A" IS PRESSURIZED; COUNTERCLOCKWISE WHEN PORT "B" IS PRESSURIZED. REVERSE: WHEN FACING SHAFT END OF MOTOR, SHAFT TO ROTATE; CLOCKWISE WHEN PORT "B" IS PRESSURIZED; COUNTERCLOCKWISE WHEN PORT "A" IS PRESSURIZED.
 - DISPLACEMENT: 15 252.8 cm³/r (15.43 in³/r)
 - MOUNTING TYPE: AM WHEEL, 4 BOLT; Ø 108.0 (4.25) PILOT Ø 13.59 (.535) HOLES ON Ø 147.6 (5.8) BOLT CIRCLE Ø 120.7 (4.75) REAR MOUNT PILOT
 - SHAFT OPTION: 9B Ø41.28 (1.625) TAPERED WITH 11.112 (.4375) SQ X 31.75 (1.250) STRAIGHT KEY, 1 1/4-18 UNEF-2A THREAD WITH SLOTTED HEX NUT
 - PORT OPTION: BA 7/8-14 UNF-2B SAE O-RING PORTS - PORT B RECESSED 11.4 (.45) FROM PORT A - END PORTS - CAST BOSS REMOVED
 - CASE FLOW OPTION: 06 NO LEAKAGE SLOTS, Ø 4.1 (.16) CASE DRAIN HOLE IN WEAR PLATE

G K S

UNLESS OTHERWISE SPECIFIED ALL DIMENSIONS ARE IN INCHES		DRAWING BASED ON ANSI Y14.5M-1982	
TOLERANCES	FINISH	DATE	TITLE
XX ± .0005	AGJ 9-21-01	INTERNAL HEAT TREAT	4000 COMPACT SERIES MOTOR INSTALLATION
XX ± .001	SMK 9-25-01	THIRD ANGLE PROJECTION	167-0036-001
UNSPECIFIED MADE ARE	DO NOT SCALE	SCALE 1/1	SHEET 1 OF 1