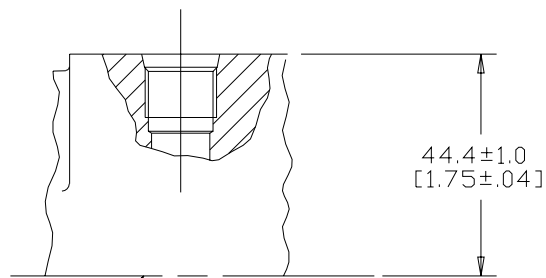


REV	DESCRIPTION	BY	CHK	DATE	ECN
A	ENGINEERING RELEASE	RCB	GCB	05-17-97	M17476
B	WAS 38.9±0.8 [1.53±.03]	SMM		04-08-04	47617
C	PORT TYPE OPTION WAS "R"	SSD		03-27-07	0004356
D	REVISED FOR STACK-UP	SMT		07-12-11	M82724

NOTE

1 PORT TYPE:- OPTION AK



MOTOR CENTERLINE

REVIEWED FOR CLASSIFICATION PER ESP-042

UNLESS OTHERWISE SPECIFIED ALL DIMENSIONS ARE IN INCHES <input type="checkbox"/> MILLIMETERS (INCHES) <input checked="" type="checkbox"/>		DRAWING BASED ON ASME Y14.5M-1994	
TOLERANCES .X ± --- .XX ± --- .XXX ± --- < ± ---		THE REPRODUCTION, DISTRIBUTION, AND UTILIZATION OF THIS DOCUMENT, AS WELL AS THE COMMUNICATION OF ITS CONTENTS TO OTHERS WITHOUT EXPLICIT AUTHORIZATION IS PROHIBITED. OFFENDERS WILL BE HELD LIABLE FOR THE PAYMENT OF DAMAGES. ALL RIGHTS RESERVED IN THE EVENT OF THE GRANT OF A PATENT, UTILITY MODEL, OR DESIGN. (PER ISO 10016)	
UNSPECIFIED RADII ARE: -		DRAWN BY/DATE RCB 06/03/97	MATERIAL/HEAT TREAT -
UNSPECIFIED DRAFT ANGLES ARE: ° -		CHECKED BY/DATE GCB 06/03/97	TITLE T MOTOR PORT INSTALLATION
B SIZE		ENGRG BY/DATE RVA 06/25/97	NUMBER A-110-040
DO NOT SCALE		METALLURGY BY/DATE ---	SCALE 1/1
THIRD ANGLE PROJECTION		MICROINCHES <input checked="" type="checkbox"/> MICROMETERS <input type="checkbox"/> ARITHMETICAL AVERAGE <input checked="" type="checkbox"/>	SHEET 1 OF 1

Danfoss