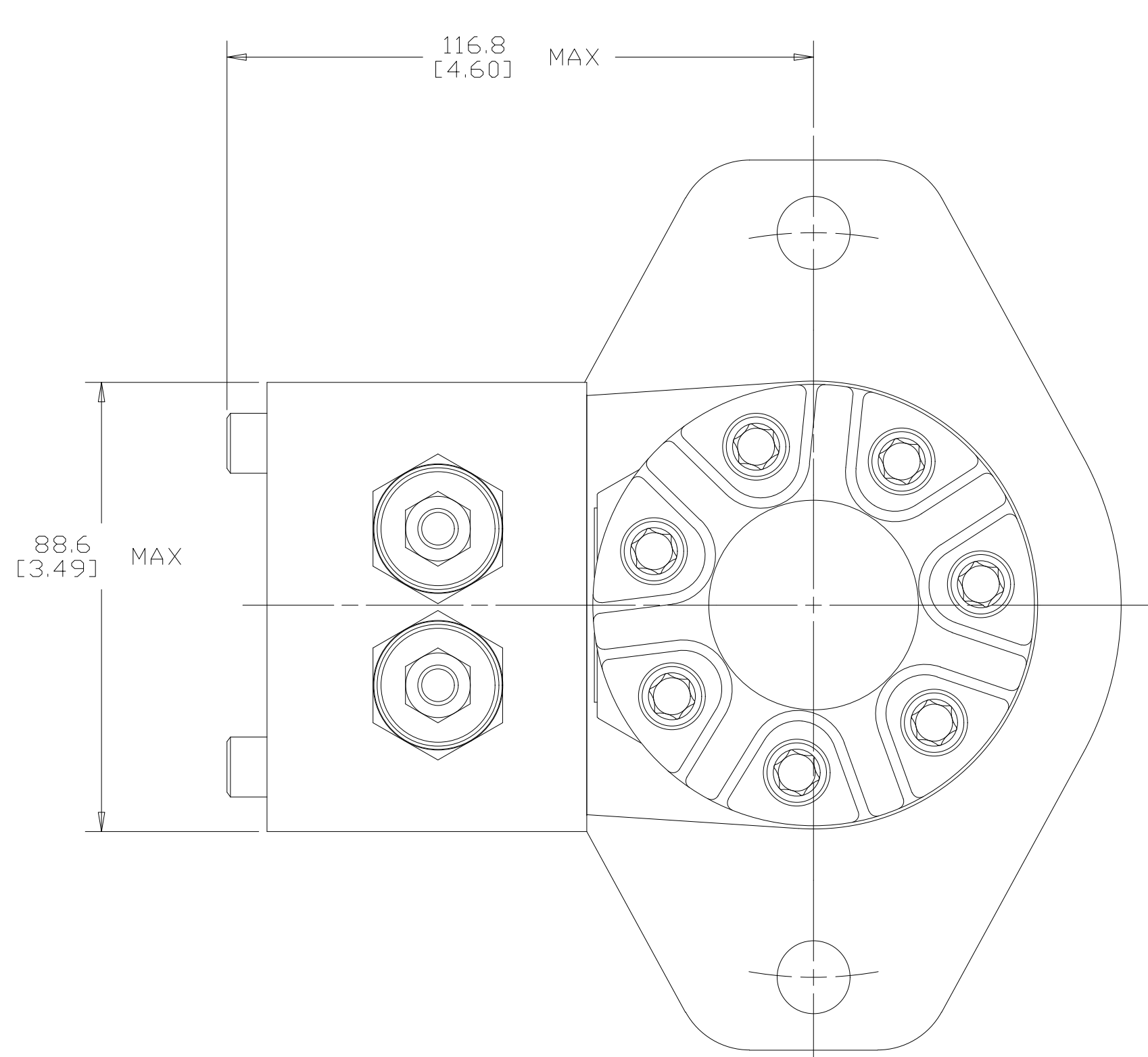
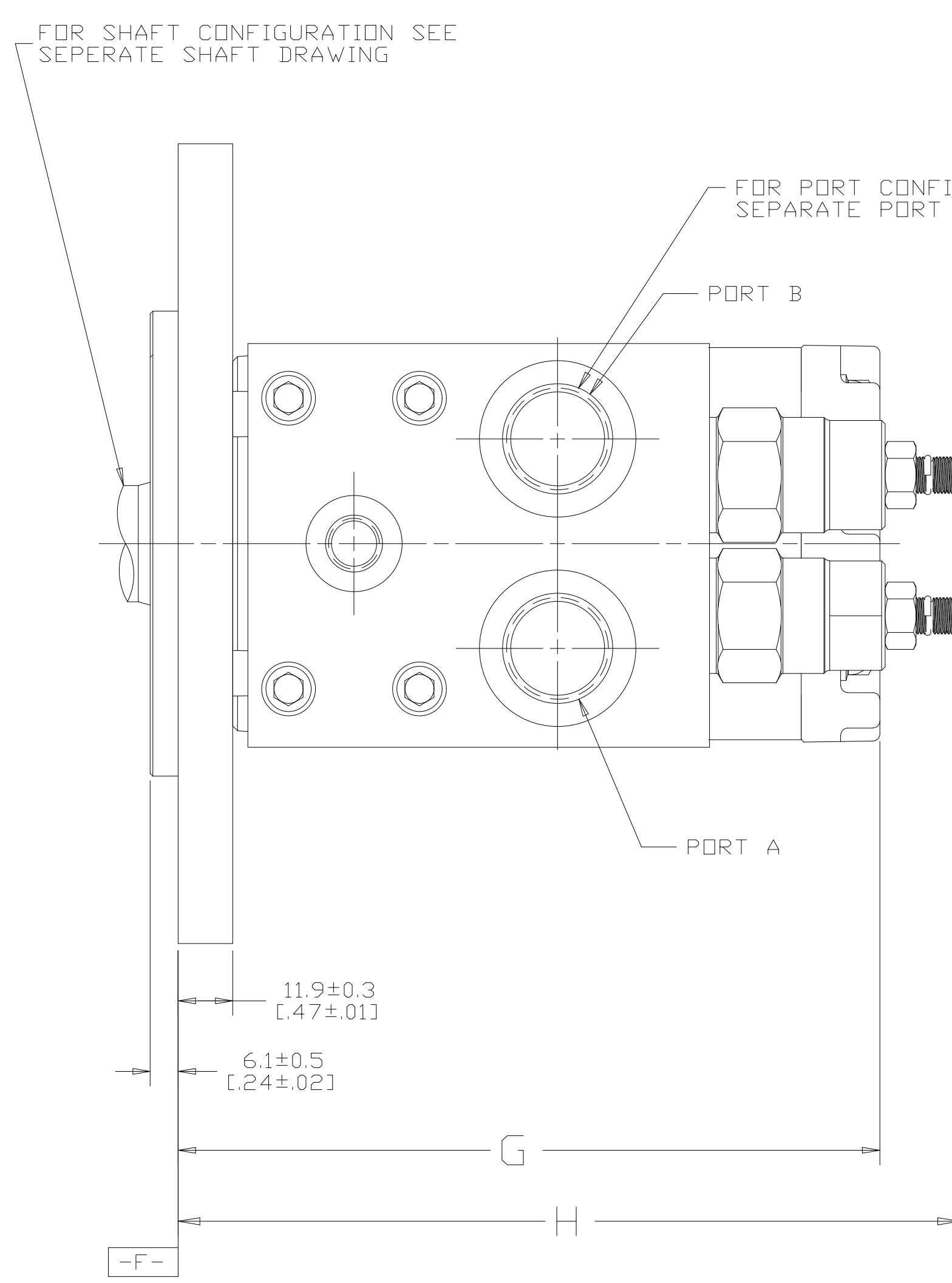
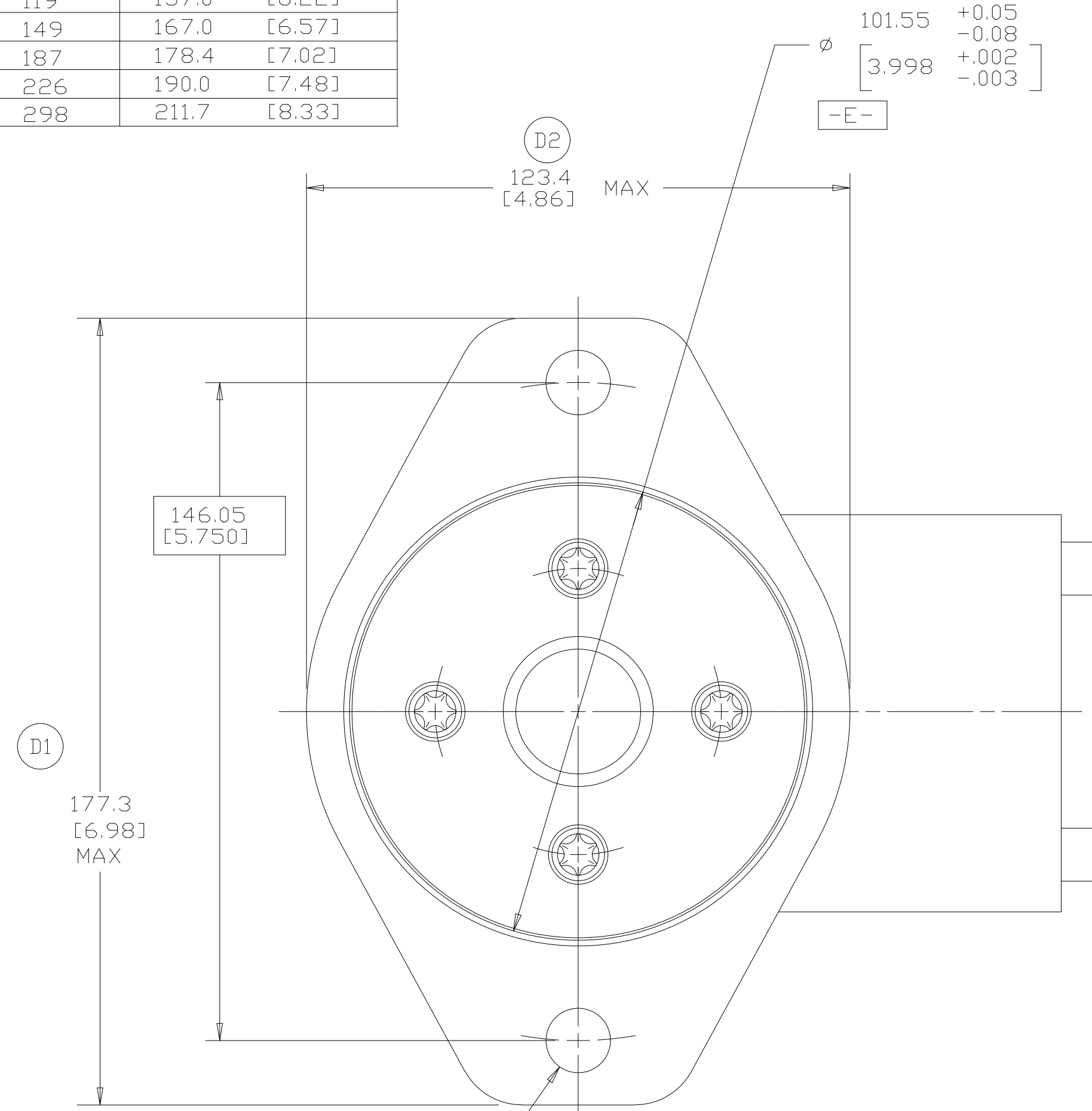


DISPL CODE	G	MAX
022	128.9	[5.08]
025	129.8	[5.11]
030	131.3	[5.17]
036	133.1	[5.24]
040	134.3	[5.29]
049	137.0	[5.40]
062	140.9	[5.55]
080	146.3	[5.76]
096	151.2	[5.95]
119	157.0	[6.22]
149	167.0	[6.57]
187	178.4	[7.02]
226	190.0	[7.48]
298	211.7	[8.33]

REV	DESCRIPTION	BY	CHK	DATE	ECN
A	ENGINEERING RELEASE	RAF	GCB	5-19-97	M17528
B	REVISED PICTORIALY	JMS		6-7-99	32894
C	-1>(3D)116.8[4.60]MAX WAS 104.1[4.10]MAX -2>(3C)88.6[3.49]MAX WAS 83.1[3.27]MAX -3>(4C)REMOVED Ø91.9[3.62]MAX -4>(7d)REVISED TAB BLOCK -5>REVISED PICTORIALY	AGJ		11/17/03	46014
D	-1>(4C) WAS 177.1 [6.97] MAX. -2>(7D) WAS 122.2 [4.81] MAX.	AAK		04-07-04	46856
E	-1>(8D)UPDATED TABLE FOR DISPL CODE -2>(6A)NOTE 2 MOUNTING FLANGE WAS "H"	PM		03-27-07	0004355
F	(6A) NOTE 3 WAS CASE DRAIN : 0..	SSP	SB	12-26-15	0068068_1



NOTE

1 ROTATION  
STANDARD WHEN FACING SHAFT END OF MOTOR SHAFT TO ROTATE CLOCKWISE WHEN PORT "A" IS PRESSURIZED COUNTERCLOCKWISE WHEN PORT "B" IS PRESSURIZED  
REVERSE WHEN FACING SHAFT END OF MOTOR SHAFT TO ROTATE CLOCKWISE WHEN PORT "B" IS PRESSURIZED COUNTERCLOCKWISE WHEN PORT "A" IS PRESSURIZED

2 MOUNTING FLANGE  
DD = STANDARD, 2 BOLT: Ø 101.6 [4.00] X 6.1 [0.24] PILOT  
Ø 14.35 [0.565] HOLES ON Ø 146.0 [5.75] BOLT CIRCLE (SAE B)

3 CASE DRAIN  
00 = NO CASE DRAIN

UNLESS OTHERWISE SPECIFIED ALL DIMENSIONS ARE IN INCHES <input type="checkbox"/> MILLIMETERS <input checked="" type="checkbox"/>		DRAWING BASED ON ANSI Y14.5M-1982	
TOLERANCES X ± ---- XX ± ---- XXX ± ---- < ± ----		THE REPRODUCTION, DISTRIBUTION AND UTILIZATION OF THIS DOCUMENT AS WELL AS THE COMMUNICATION OF ITS CONTENTS TO OTHER WITHOUT EXPLICIT AUTHORIZATION IS PROHIBITED. OFFENDERS WILL BE HELD LIABLE FOR THE PAYMENT OF DAMAGES. ALL RIGHT RESERVED IN THE EVENT OF THE GRANT OF A PATENT, UTILITY MODEL OR DESIGN. (PER ISO 16016)	
UNSPECIFIED RADII ARE ----		DRAWN BY/DATE RAF 6-3-97 MATERIAL/HEAT TREAT	
UNSPECIFIED DRAFT ANGLES ARE ----		CHECKED GCB 6-5-97	
DRAWING FORMAT CADD <input type="checkbox"/> MANUAL <input type="checkbox"/>		ENGRG BY/DATE RJE 6-9-97 TITLE	
THIRD ANGLE PROJECTION		METALLURGY ----	
DO NOT SCALE		MICROINCHES <input type="checkbox"/> NUMBER	
ARITHMETICAL AVERAGE		MICROMETERS <input checked="" type="checkbox"/> 250	
SCALE 1/1		A-821-049	
SHEET 1 OF 1			

