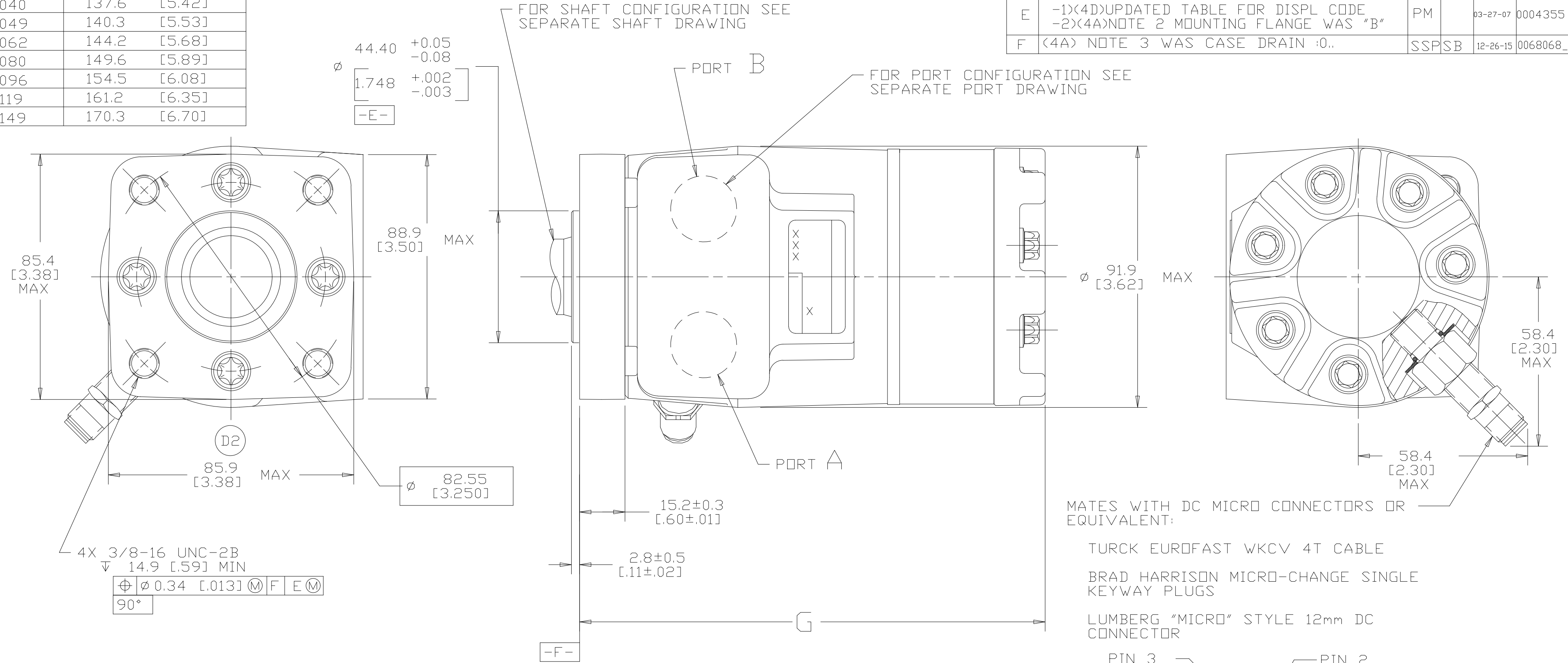


DISPL CODE	G	DISPL CODE	G	MAX
018	132.2 [5.21]	187	181.7 [7.15]	
022	132.2 [5.21]	226	193.3 [7.61]	
025	133.1 [5.24]	298	215.0 [8.46]	
030	134.6 [5.30]			
036	136.4 [5.37]			
040	137.6 [5.42]			
049	140.3 [5.53]			
062	144.2 [5.68]			
080	149.6 [5.89]			
096	154.5 [6.08]			
119	161.2 [6.35]			
149	170.3 [6.70]			

REV	DESCRIPTION	BY	CHK	DATE	ECN
A	RELEASE FOR SAMPLES AND ESTIMATE	RAF		6-26-96	M15648
B	-1>REVISED SENSOR PICTORIALY -2>ENGINEERING RELEASE	RAF		9-4-96	28620
C	ADDED SENSOR DIMENSIONS	MGF		11-11/97	30385
D	-1>(4C) WAS 83.4 [3.28] MAX. -2>(4C) WAS 83.4 [3.28] MAX.	AAK		04-07-04	46856
E	-1>(4D)UPDATED TABLE FOR DISPL CODE -2>(4A)NOTE 2 MOUNTING FLANGE WAS "B"	PM		03-27-07	0004355
F	(4A) NOTE 3 WAS CASE DRAIN :0..	SSPSB		12-26-15	0068068_1



NOTE

1 ROTATION STANDARD WHEN FACING SHAFT END OF MOTOR SHAFT TO ROTATE CLOCKWISE WHEN PORT "A" IS PRESSURIZED COUNTERCLOCKWISE WHEN PORT "B" IS PRESSURIZED

REVERSE WHEN FACING SHAFT END OF MOTOR SHAFT TO ROTATE CLOCKWISE WHEN PORT "B" IS PRESSURIZED COUNTERCLOCKWISE WHEN PORT "A" IS PRESSURIZED

2 MOUNTING FLANGE
BA = STANDARD, 4 BOLT: ∅ 44.4 [1.75] X 3.0 [0.12] PILOT
3/8-16 THREADED HOLES ON ∅ 82.6 [3.25] BOLT CIRCLE

3 CASE DRAIN
00 = NO CASE DRAIN

4 SENSOR OUTPUT WILL BE 15 ELECTRICAL PULSES PER SHAFT REVOLUTION.
SUPPLY VOLTAGE: 8 TO 28 Vdc
OUTPUT VOLTAGE: LOW .5 Vdc AT 10 mA; HIGH Vs-1 Vdc

UNLESS OTHERWISE SPECIFIED ALL DIMENSIONS ARE IN INCHES <input type="checkbox"/> MILLIMETERS <input checked="" type="checkbox"/> TOLERANCES .x ± ---- .xx ± ---- .xxx ± ---- < ± ---- UNSPECIFIED RADII ARE ---- UNSPECIFIED DRAFT ANGLES ARE ---- DRAWING FORMAT CADD <input checked="" type="checkbox"/> MANUAL <input type="checkbox"/>	DRAWING BASED ON ANSI Y14.5M-1982		
	THE REPRODUCTION, DISTRIBUTION AND UTILIZATION OF THIS DOCUMENT AS WELL AS THE COMMUNICATION OF ITS CONTENTS TO OTHER WITHOUT EXPLICIT AUTHORIZATION IS PROHIBITED. OFFENDERS WILL BE HELD LIABLE FOR THE PAYMENT OF DAMAGES. ALL RIGHT RESERVED IN THE EVENT OF THE GRANT OF A PATENT, UTILITY MODEL OR DESIGN. (PER ISO 16016)		
	DRAWN BY/DATE RAF 6-27-96 CHECKED BY/DATE GCB 7-1-96 ENGRG BY/DATE RVA 7-1-96 METALLURGY BY/DATE ----	MATERIAL/HEAT TREAT TITLE T MOTOR INSTALLATION	
	THIRD ANGLE PROJECTION DO NOT SCALE	MICROINCHES <input type="checkbox"/> MICROMETERS <input type="checkbox"/> ARITHMETICAL AVERAGE <input checked="" type="checkbox"/>	NUMBER A-821-048 SCALE 1/1 SHEET 1 OF 1

