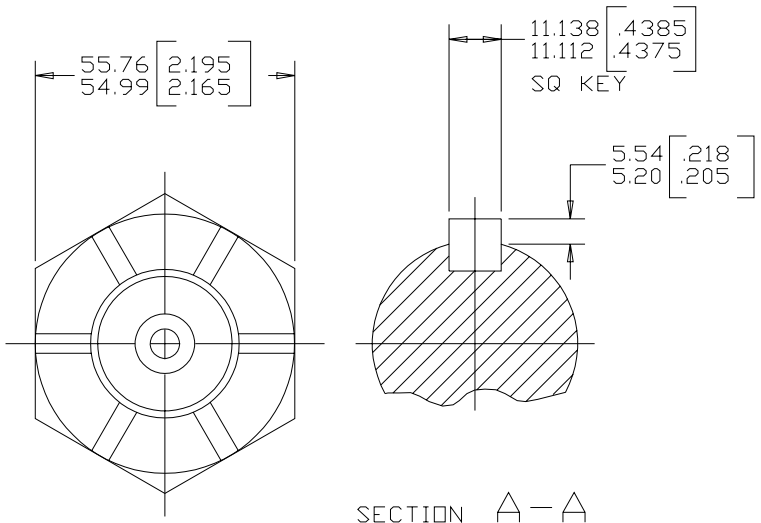


REV	DESCRIPTION	BY	CHK	DATE	ECN
A	ENGINEERING RELEASE	RAF		8-30-95	M14044
B	ADDED OPTION 16 TO NOTE 2	MLL		01-08-01	M24814
C	-1>MOUNTING TYPE WAS 'C' -2>OUTPUT SHAFT WAS '16'	VBH		12-11-06	0001664
D	-1>ADDED OPTION 25 TO NOTE 2 -2>UPDATED PRINT TO ASME Y14.5M-1994	YUP	CSG	01-17-13	M87983



SECTION A-A

44.45 [1.750] TAPER SHAFT END
1.498-1.502:12 PER SAE J501
EXCEPT AS SPECIFIED

NOTE

- 1 MOUNTING TYPE: OPTION AC
- 2 OUTPUT SHAFT: OPTION 02, 08 AND 25

CS REVIEWED FOR CLASSIFICATION PER ESP-042

UNLESS OTHERWISE SPECIFIED ALL DIMENSIONS ARE IN INCHES <input type="checkbox"/> MILLIMETERS <input checked="" type="checkbox"/>		DRAWING BASED ON ASME Y14.5M-1994	
TOLERANCES .x ± ---- .xx ± REF .xxx ± ONLY ∠ ± ----		THE REPRODUCTION, DISTRIBUTION, AND UTILIZATION OF THIS DOCUMENT, AS WELL AS THE COMMUNICATION OF ITS CONTENTS TO OTHERS WITHOUT EXPLICIT AUTHORIZATION IS PROHIBITED. OFFENDERS WILL BE HELD LIABLE FOR THE PAYMENT OF DAMAGES. ALL RIGHTS RESERVED IN THE EVENT OF THE GRANT OF A PATENT, UTILITY MODEL, OR DESIGN. (PER ISO 16016)	
UNSPECIFIED RADII ARE ----		DRAWN BY/DATE RAF 9-7-95	MATERIAL/HEAT TREAT
UNSPECIFIED DRAFT ANGLES ARE ----		CHECKED BY/DATE SDR 9-18-95	
B SIZE		ENGRG BY/DATE WCW 9-18-95	TITLE 6000 SERIES MOTOR SHAFT INSTALLATION
THIRD ANGLE PROJECTION		METALLURGY BY/DATE	MICROINCHES <input type="checkbox"/> MICROMETERS <input type="checkbox"/>
DO NOT SCALE		ARITHMETICAL AVERAGE <input checked="" type="checkbox"/>	NUMBER A-1021-002
		SCALE 1/1	SHEET 1 OF 1

