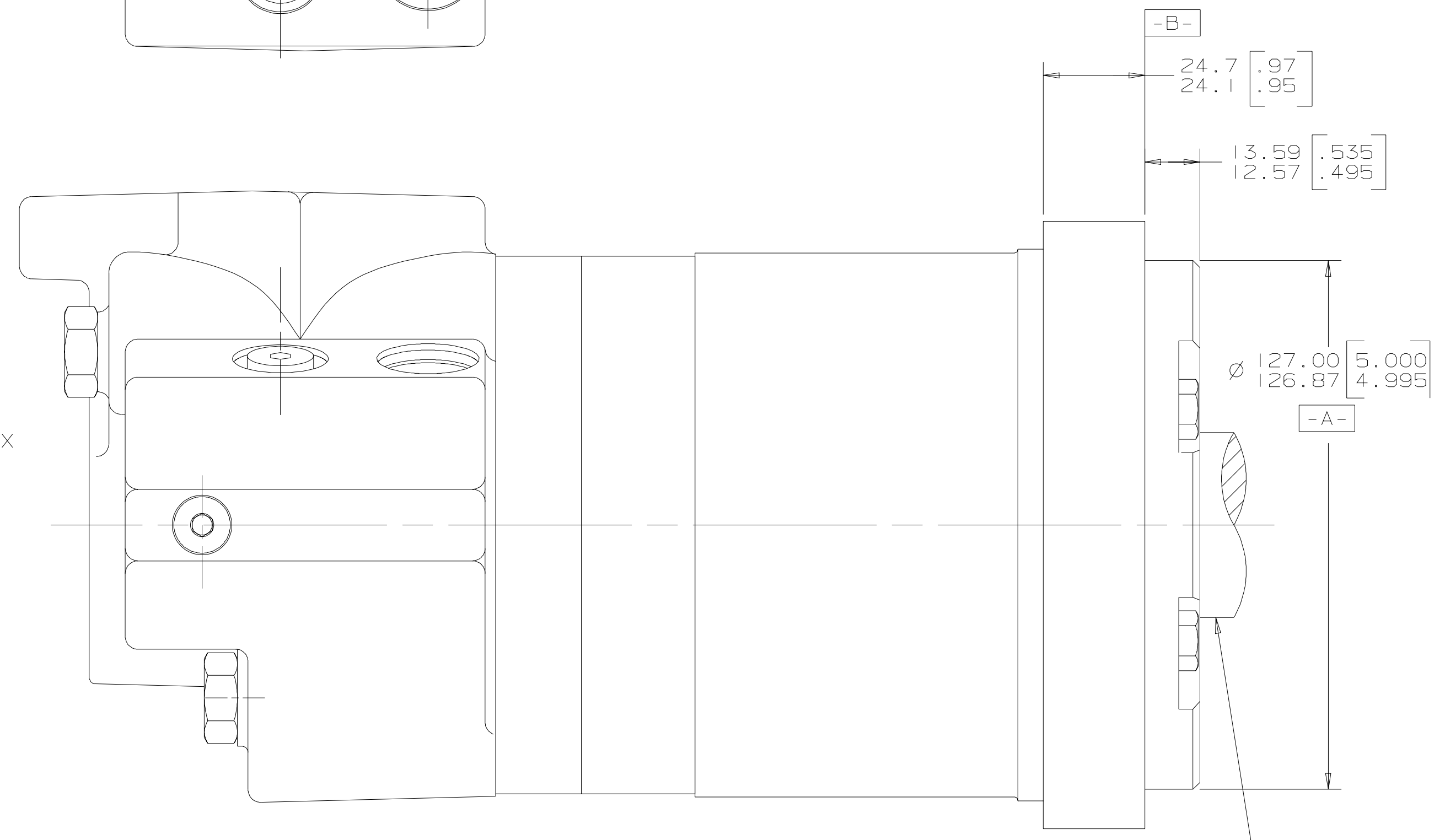
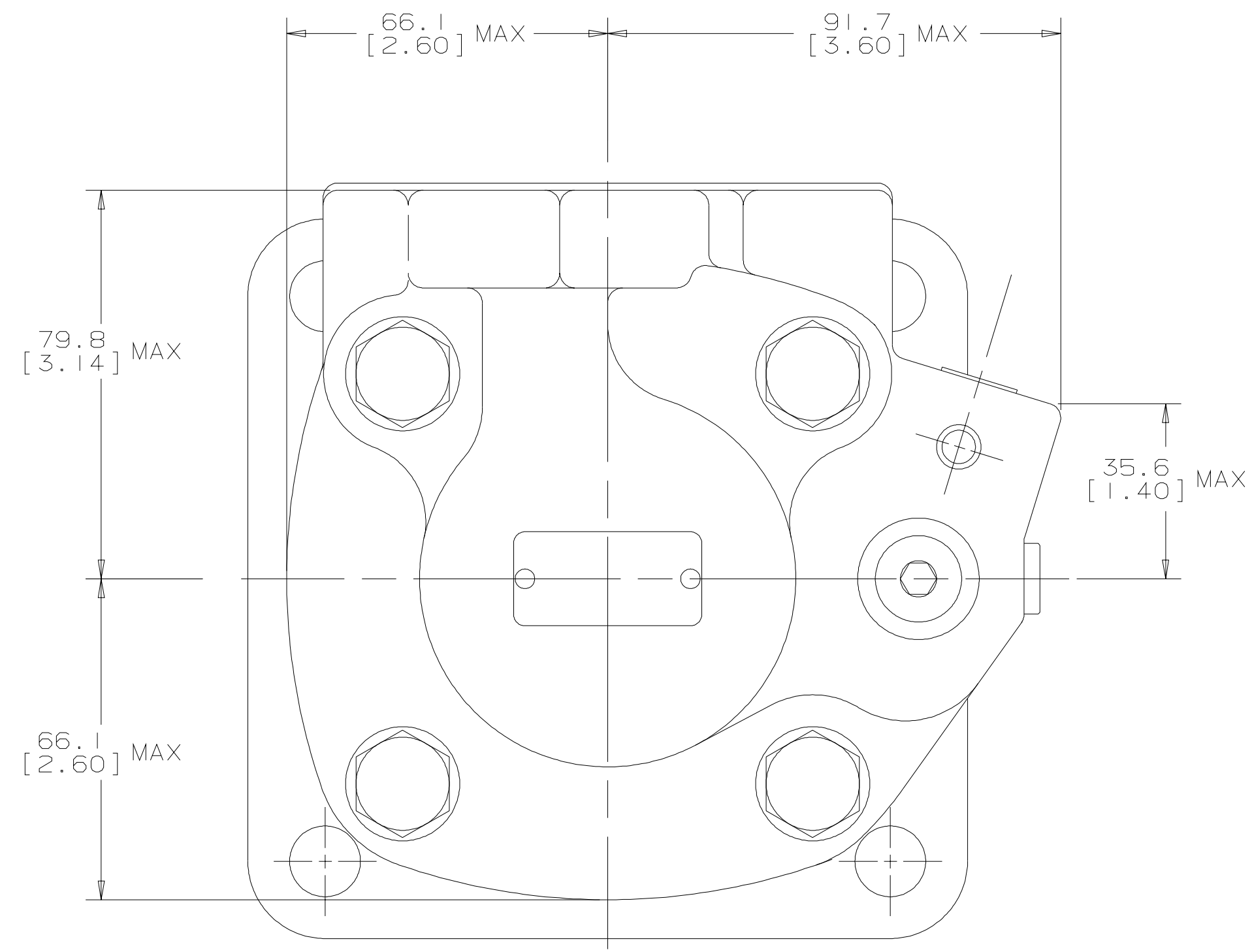
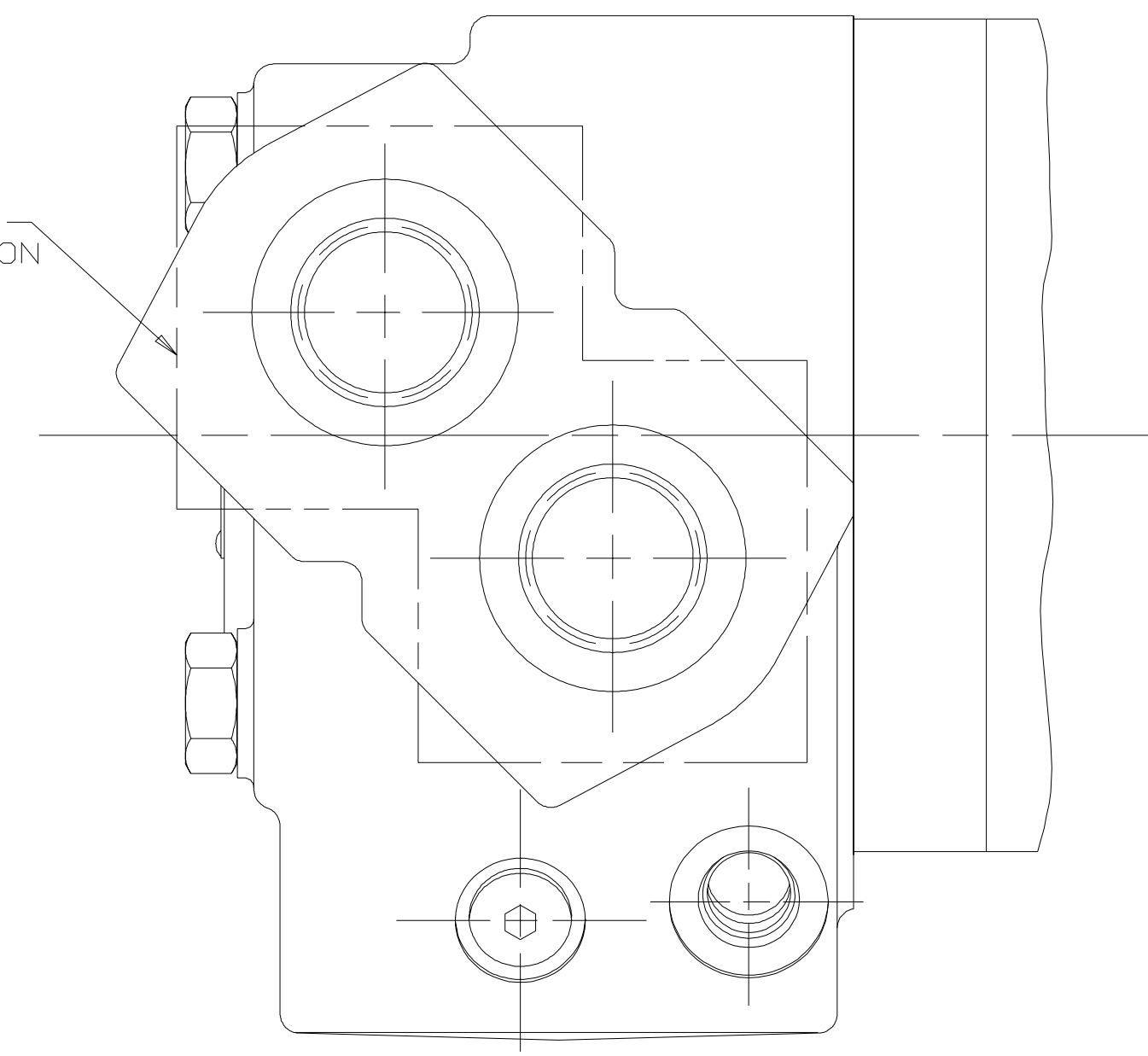
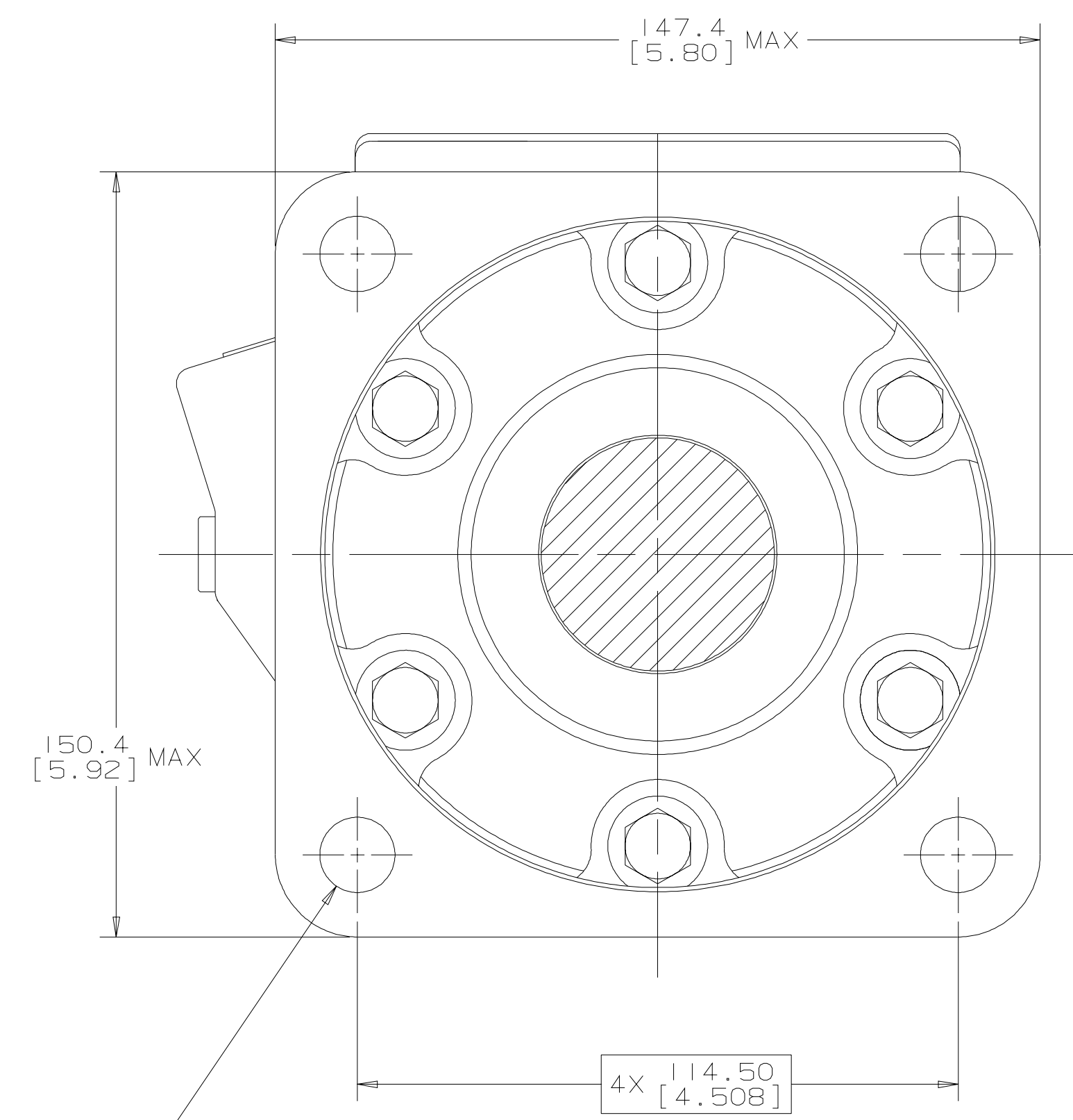


REV	DESCRIPTION	BY	CHK	DATE	ECN
A	RELEASE FOR SAMPLES AND ESTIMATE	RAF		12-10-97	M18882
B	REVISED PICTORIALY	AGJ		5-10-01	38066
C	(4A) MOUNTING TYPE WAS "B"	SSD		12-11-06	0001664

SEE PORT INSTALLATION FOR PORTING INFORMATION



SEE SHAFT INSTALLATION



4X Ø 14.53 [.572] / 14.14 [.557]  
 Ø 0.69 [.027] M B A M

NOTE

- 1 ROTATION
  - STANDARD: WHEN FACING SHAFT END OF MOTOR, SHAFT TO ROTATE: COUNTERCLOCKWISE WHEN PORT "B" IS PRESSURIZED
  - REVERSE: WHEN FACING SHAFT END OF MOTOR, SHAFT TO ROTATE: COUNTERCLOCKWISE WHEN PORT "A" IS PRESSURIZED
- 2 MOUNTING TYPE: AB
  - STANDARD: (SAE CC), 4 BOLT: Ø127.0 [5.00] PILOT Ø14.35 [.565] HOLES ON Ø162.0 [6.38] BOLT CIRCLE

G K S

UNLESS OTHERWISE SPECIFIED ALL DIMENSIONS ARE IN INCHES <input type="checkbox"/> MILLIMETERS <input checked="" type="checkbox"/>		DRAWING BASED ON ANSI Y14.5M-1982	
TOLERANCES		NOTICE TO PERSONS RECEIVING THIS DRAWING AND / OR TECHNICAL INFORMATION Eaton Corporation claims proprietary rights in the information disclosed herein. This document is issued in confidence and is not to be reproduced or used to manufacture anything shown hereon without the written permission of the Eaton Corporation.	
.XX ±----	DRAWN BY/DATE RAF 12-10-97	MATERIAL/HEAT TREAT	
.XXX ±----	CHECKED BY/DATE RAF 12-11-97		
∠ ----	ENGR. BY/DATE JDM 12-11-97	TITLE 6000 SERIES MOTOR INSTALLATION	
UNSPECIFIED RADI ARE	METALLURGY ---- BY/DATE		
UNSPECIFIED DRAFT ANGLES ARE	THIRD ANGLE PROJECTION	MICROINCHES [MICROINCHES]	NUMBER A-1013-012
DRAWING FORMAT CAD <input checked="" type="checkbox"/> MANUAL <input type="checkbox"/>	DO NOT SCALE	ARITHMETICAL AVERAGE	SCALE 1/1 SHEET 1 OF 1

