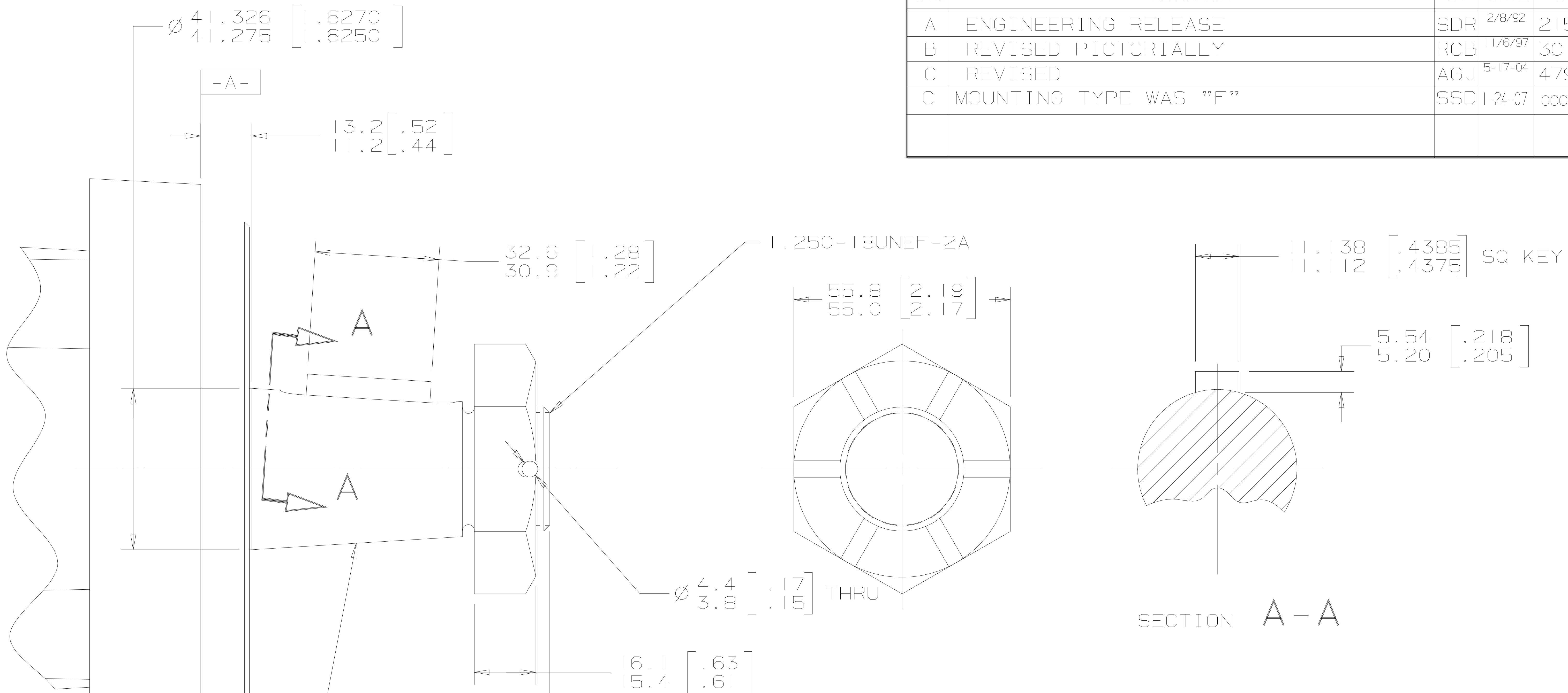


SYM	REVISION	BY	DATE	ECN
A	ENGINEERING RELEASE	SDR	2/8/92	21551
B	REVISED PICTORIALLY	RCB	11/6/97	30171
C	REVISED	AGJ	5-17-04	47918
C	MOUNTING TYPE WAS "F"	SSD	1-24-07	0002527



SECTION A-A

NOTE

- 1 MOUNTING TYPE: OPTION AF
- 2 OUTPUT SHAFT: OPTION O2

UNLESS OTHERWISE SPECIFIED ALL DIMENSIONS ARE IN INCHES <input type="checkbox"/> MILLIMETERS [INCHES] <input checked="" type="checkbox"/>	DRAWING BASED ON ANSI Y14.5M-1982	
	NOTICE TO PERSONS RECEIVING THIS DRAWING AND / OR TECHNICAL INFORMATION Eaton Corporation claims proprietary rights in the information disclosed hereon. This document is issued in confidence and is not to be reproduced or used to manufacture anything shown hereon without the written permission of the Eaton Corporation.	
TOLERANCES .X ± ---- .XX ± REF .XXX ± ONLY < ----	DRAWN S. RICHARDS BY/DATE 4/9/92 CHECKED K. RANDOLPH BY/DATE 7/8/92 ENGRG R. ANDERSON BY/DATE 7/31/92 METALLURGY BY/DATE -----	MATERIAL/HEAT TREAT TITLE 4000 SERIES MOTOR SHAFT INSTALLATION
UNSPECIFIED RADII ARE UNSPECIFIED DRAFT ANGLES ARE DRAWING FORMAT CADD <input checked="" type="checkbox"/> MANUAL <input type="checkbox"/>	THIRD ANGLE PROJECTION DO NOT SCALE	MICROINCHES <input checked="" type="checkbox"/> MICROMETERS [MICROINCHES] <input type="checkbox"/> ARITHMETICAL AVERAGE <input checked="" type="checkbox"/>
NUMBER A-609-002		SCALE 1/1 SHEET 1 OF 1

