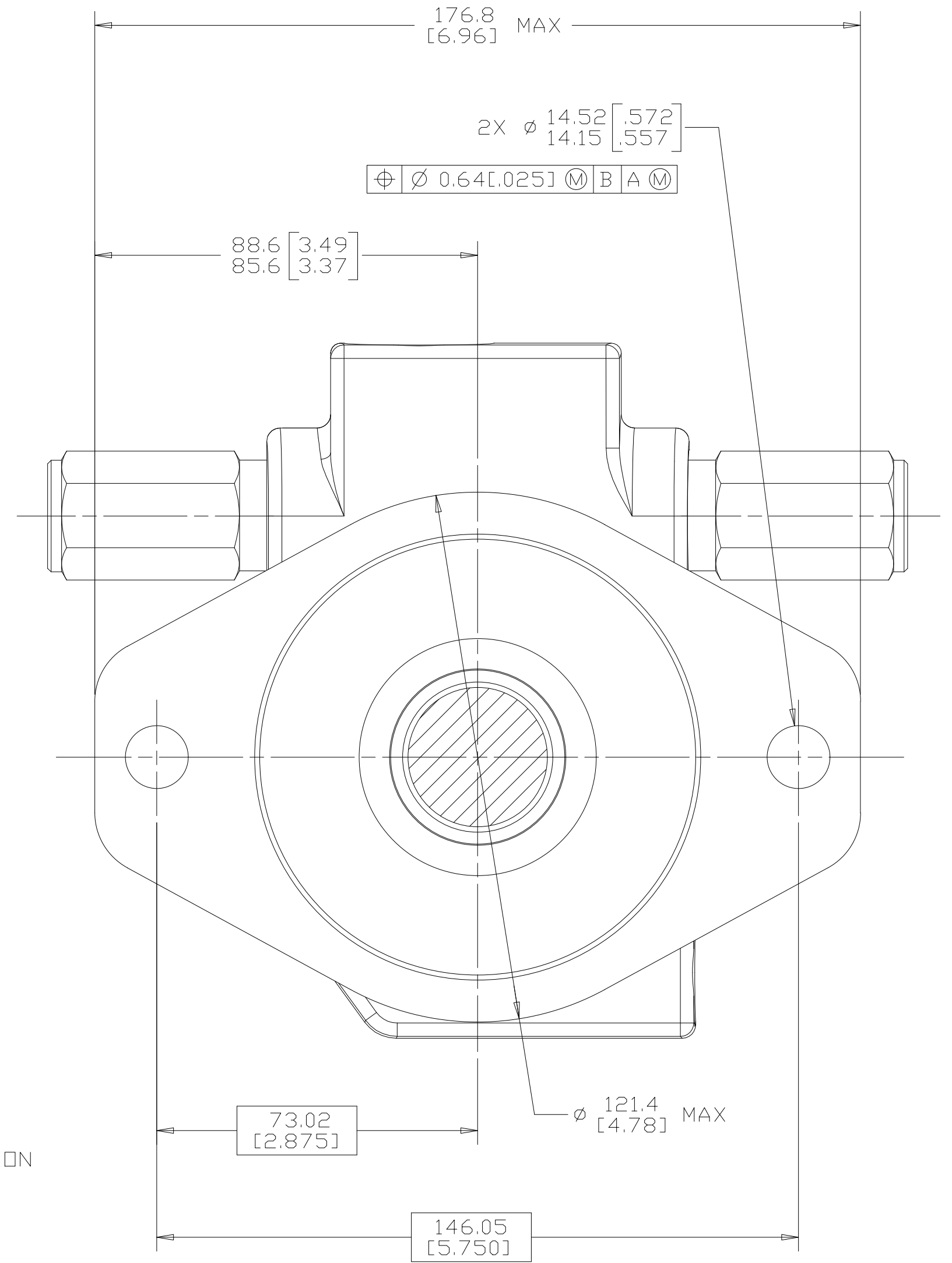
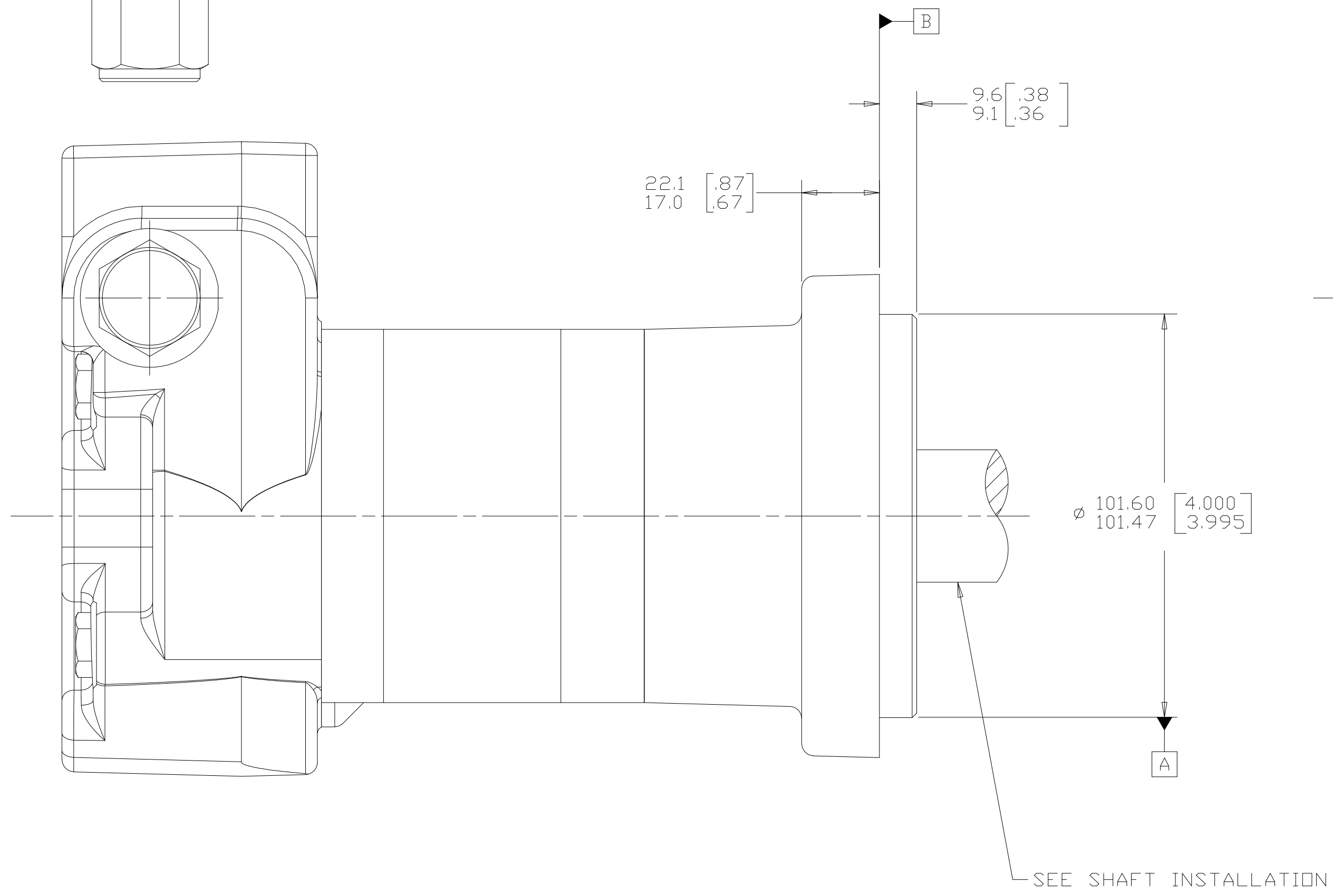
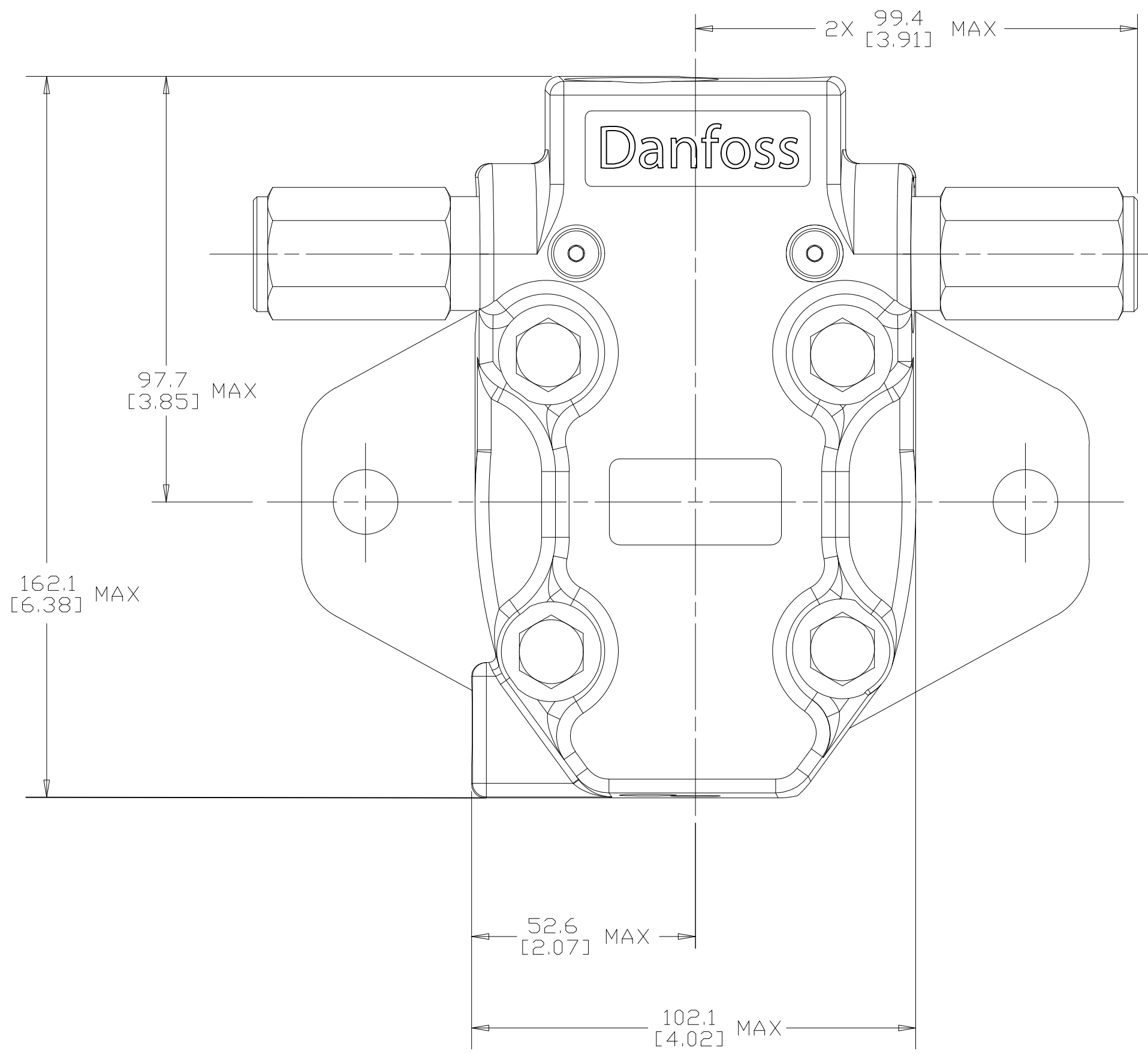
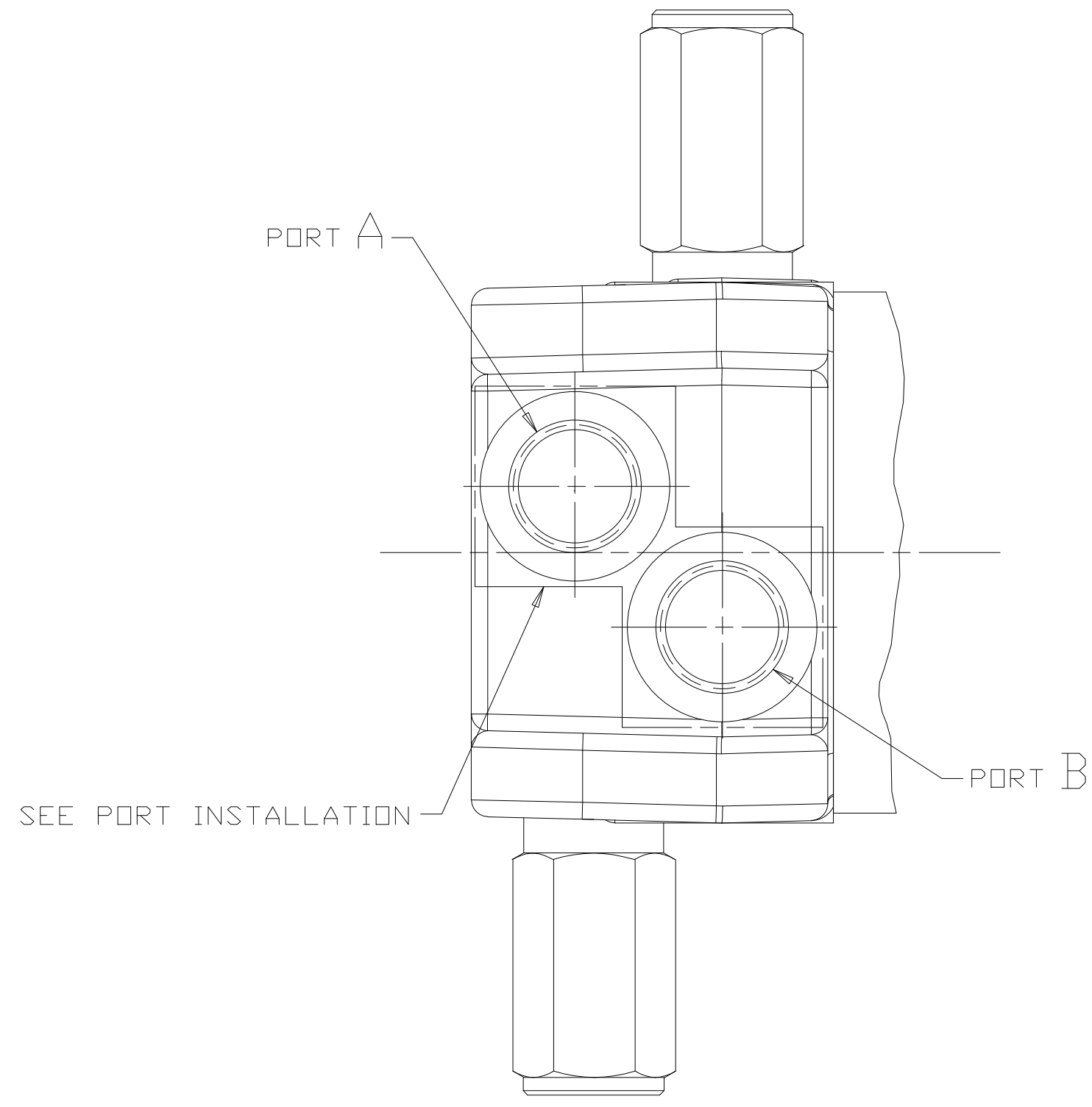


REV	DESCRIPTION	BY	CHK	DATE	ECN
A	ENGINEERING RELEASE	AGJ		12-09-03	M60463
B	(8B)96.5[3.80] MAX -WAS- 95.0[3.74] MAX	MGF		4-2-04	47302
C	REVISED AS PER STACK-UP	SMT	AAB	02-08-13	M88265



NOTE

1 ROTATION:
 STANDARD: WHEN FACING SHAFT END OF MOTOR, SHAFT TO ROTATE;
 CLOCKWISE WHEN PORT "A" IS PRESSURIZED
 COUNTERCLOCKWISE WHEN PORT "B" IS PRESSURIZED

REVERSE: WHEN FACING SHAFT END OF MOTOR, SHAFT TO ROTATE;
 CLOCKWISE WHEN PORT "B" IS PRESSURIZED
 COUNTERCLOCKWISE WHEN PORT "A" IS PRESSURIZED

2 MOUNTING TYPE: AF
 STANDARD, 2 BOLT: $\phi 101.6$ [4.00] PILOT
 $\phi 14.35$ [0.565] HOLES ON $\phi 146.0$ [5.75] BOLT CIRCLE "SAE B"

REVIEWED FOR CLASSIFICATION PER ESP-042

DRAWING BASED ON ASME Y14.5M-1994

UNLESS OTHERWISE SPECIFIED ALL DIMENSIONS ARE IN INCHES
 MILLIMETERS

TOLERANCES
 .X ± ---
 .XX ± ---
 .XXX ± ---
 $\leq \pm$ ---

UNSPECIFIED RADII ARE:

UNSPECIFIED DRAFT ANGLES ARE:
 °

D SIZE

THIRD ANGLE PROJECTION
 DO NOT SCALE

ARITHMETICAL AVERAGE

THE REPRODUCTION, DISTRIBUTION AND UTILIZATION OF THIS DOCUMENT AS WELL AS THE COMMUNICATION OF ITS CONTENTS TO OTHER WITHOUT EXPLICIT AUTHORIZATION IS PROHIBITED. OFFENDERS WILL BE HELD LIABLE FOR THE PAYMENT OF DAMAGES. ALL RIGHT RESERVED IN THE EVENT OF THE GRANT OF A PATENT, UTILITY MODEL OR DESIGN. (PER ISO 16016)

Danfoss

MATERIAL/HEAT TREAT

TITLE
 2000 SERIES MOTOR INSTALLATION

NUMBER
 A-667-018

SCALE
 1/1 SHEET 1 OF 1

DRAWN BY/DATE SMT 02-08-13
 CHECKED BY/DATE AAB 02-08-13
 ENGRG BY/DATE ---
 METALLURGY BY/DATE ---