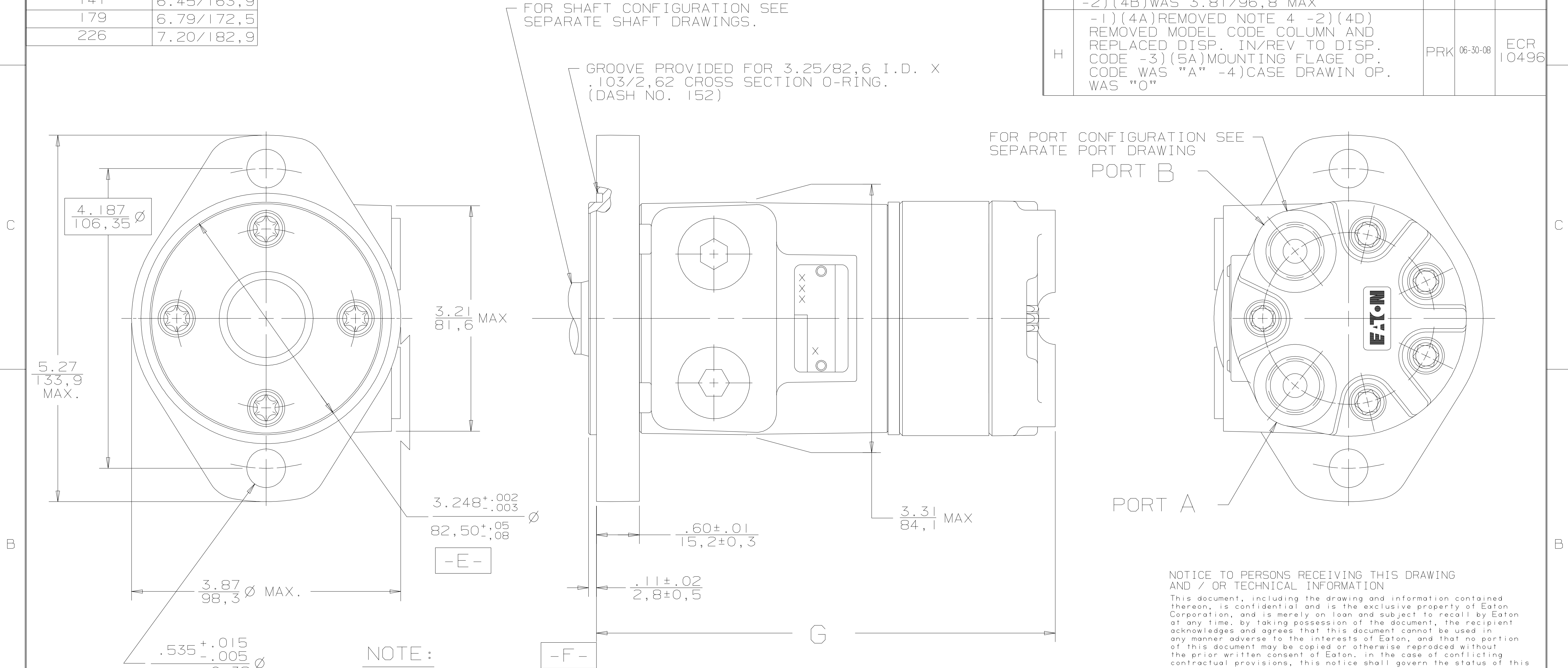


DISPLACEMENT CODE	G MAX
022	5.45/138,5
028	5.45/138,5
035	5.60/142,3
045	5.60/142,3
059	5.72/145,3
073	5.85/148,6
089	5.99/152,2
097	6.06/154,0
113	6.20/157,5
141	6.45/163,9
179	6.79/172,5
226	7.20/182,9

SYM	REVISION	BY	DATE	ECN
A	ENGINEERING RELEASE	RLL	11-10-87	14736
B	-1) (3C) 3.25/82,6 MAX WAS 3.21/81,6 MAX -2) (2C) REMOVED 3.31/84,1 Ø MAX -3) (2B) ADDED 3.36/85,4 MAX	DPR	12-13-89	18329
C	-1) (3C) 3.21/81,6 WAS 3.25/82,6 -2) (2B) 3.31/84,1 WAS 3.36/85,4	LK	10-9-90	19520
D	REVISED PICTORIALY	AGJ	4-7-92	22077
E	REVISED PICTORIALY	AGJ	8-27-92	22674
F	(4B) .535+.015/-.005/13.59+0.38/-0.13 Ø WAS .535±.005/13.59±0.13 Ø	AGJ	1-28-02	39853
G	-1) (4C) WAS 5.17/131,4 MAX -2) (4B) WAS 3.81/96,8 MAX	SJP	04-07-04	46856
H	-1) (4A) REMOVED NOTE 4 -2) (4D) REMOVED MODEL CODE COLUMN AND REPLACED DISP. IN/REV TO DISP. CODE -3) (5A) MOUNTING FLAGE OP. CODE WAS "A" -4) CASE DRAWIN OP. WAS "O"	PRK	06-30-08	ECR 10496



- NOTE:
1. ROTATION: STANDARD; WHEN FACING SHAFT END OF MOTOR, SHAFT TO ROTATE CLOCKWISE WHEN PORT "A" IS PRESSURIZED. COUNTERCLOCKWISE WHEN PORT "B" IS PRESSURIZED. REVERSE ; WHEN FACING SHAFT END OF MOTOR, SHAFT TO ROTATE CLOCKWISE WHEN PORT "B" IS PRESSURIZED. COUNTERCLOCKWISE WHEN PORT "A" IS PRESSURIZED.
 2. MOUNTING FLANGE: AA = 2 BOLT STD: 3.25/82,6 DIA. X .12/3,0 PILOT, .535/13,59 DIA. MOUNTING HOLES ON 4.18/106,2 DIA. B.C.
 3. CASE DRAIN: 00 = NO CASE DRAIN
 - 4.

NOTICE TO PERSONS RECEIVING THIS DRAWING AND / OR TECHNICAL INFORMATION

This document, including the drawing and information contained thereon, is confidential and is the exclusive property of Eaton Corporation, and is merely on loan and subject to recall by Eaton at any time. By taking possession of this document, the recipient acknowledges and agrees that this document cannot be used in any manner adverse to the interests of Eaton, and that no portion of this document may be copied or otherwise reproduced without the prior written consent of Eaton. In the case of conflicting contractual provisions, this notice shall govern the status of this document.

© 2008 Eaton Corporation - All Right Reserved

REVIEWED FOR CLASSIFICATION PER ESP-042

NOTICE TO PERSONS RECEIVING THIS DRAWING AND / OR TECHNICAL INFORMATION

Eaton Corporation claims proprietary rights in the information disclosed hereon. This document is issued in confidence and is not to be reproduced or used to manufacture anything shown hereon without the written permission of the Eaton Corporation.

EATON
Eaton Corporation
Hydraulics Division
15151 Highway 5
Eden Prairie, Mn. 55344

DRAWN BY/DATE	RLL 10-20-87	MATERIAL/HEAT TREAT	
CHECKED BY/DATE	KQ 1-21-88	TITLE	H MOTOR INSTALLATION
ENGRG BY/DATE	WCW 1-25-88	DO NOT SCALE	
THIRD ANGLE PROJECTION	LINEAR MEASUREMENT IN/MM	NUMBER	A-37-312
		SCALE	FULL SIZE SHEET 1 OF 1