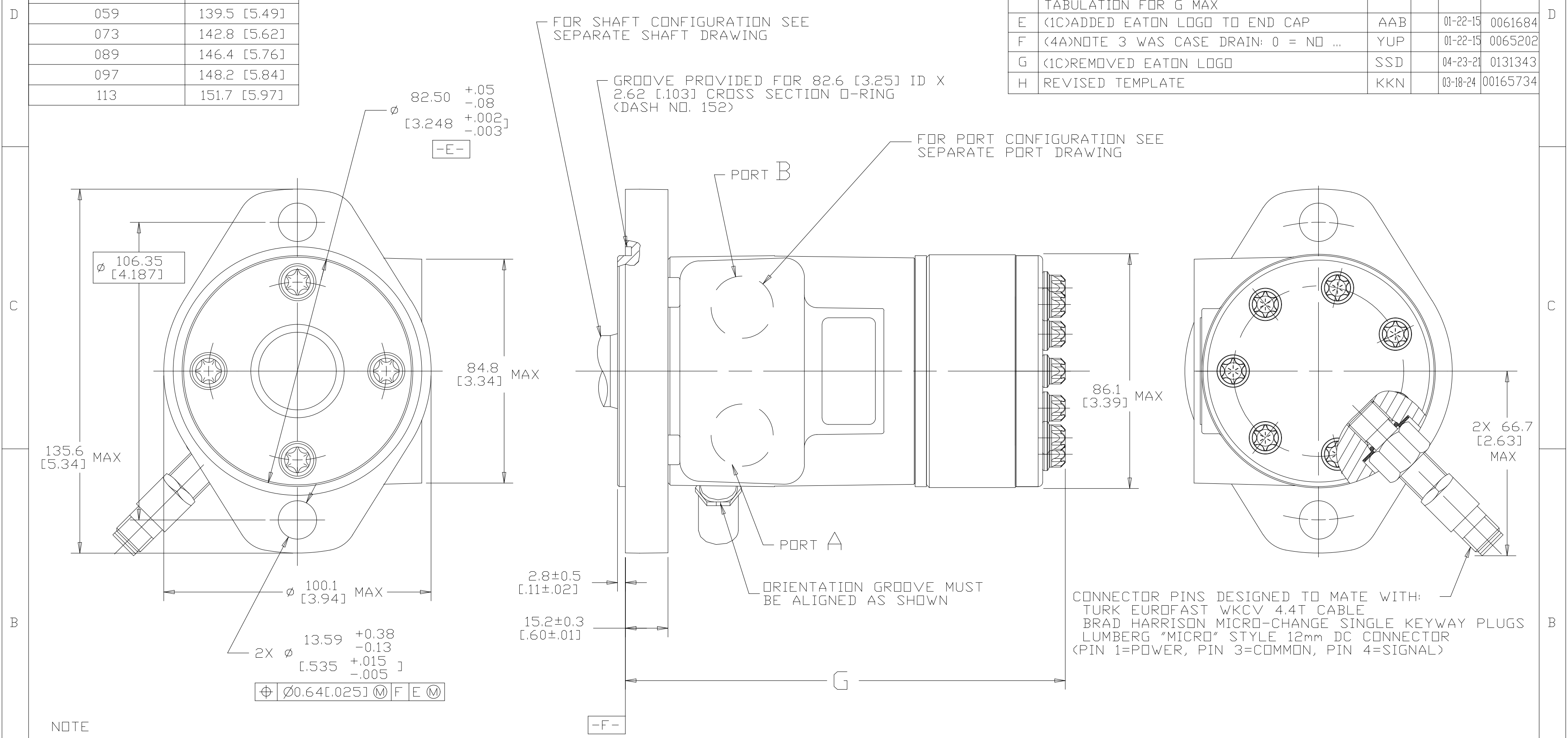


DISPLACEMENT CODE	G	MAX	DISPLACEMENT CODE	G	MAX
022	132.7	[5.22]	141	158.1	[6.22]
025	133.5	[5.26]	179	166.7	[6.56]
028	132.7	[5.22]	226	177.1	[6.97]
035	136.5	[5.37]	451	228.0	[8.98]
045	136.5	[5.37]			
059	139.5	[5.49]			
073	142.8	[5.62]			
089	146.4	[5.76]			
097	148.2	[5.84]			
113	151.7	[5.97]			

REV	DESCRIPTION	BY	CHK	DATE	ECN
A	ENGINEERING RELEASE	SMM		09-13-02	M28891
B	-1>(4C>WAS 131.4/[5.17] MAX -2>(4B>WAS 96.8/[3.81] MAX	SJP		04-07-04	46856
C	-1>REVISED DIMENSIONS AS PER STACK UP -2>REVISED TABULATION BLOCK -3>REVISED GD AND T	CSG		12-28-10	M80923
D	-1>REVISED PICTORIALY -2>(4D>UPDATED TABULATION FOR G MAX	AAB		02-17-14	0054755
E	<1C>ADDED EATON LOGO TO END CAP	AAB		01-22-15	0061684
F	<4A>NOTE 3 WAS CASE DRAIN: 0 = NO ...	YUP		01-22-15	0065202
G	<1C>REMOVED EATON LOGO	SSD		04-23-21	0131343
H	REVISED TEMPLATE	KKN		03-18-24	00165734



NOTE

1 ROTATION:
 STANDARD: WHEN FACING SHAFT END OF MOTOR, SHAFT TO ROTATE CLOCKWISE WHEN PORT "A" IS PRESSURIZED COUNTERCLOCKWISE WHEN PORT "B" IS PRESSURIZED
 REVERSE: WHEN FACING SHAFT END OF MOTOR, SHAFT TO ROTATE COUNTERCLOCKWISE WHEN PORT "B" IS PRESSURIZED CLOCKWISE WHEN PORT "A" IS PRESSURIZED

2 MOUNTING FLANGE: AA = 2 BOLT STD: $\phi 82.6$ [3.25] X 3.0 [.12] PILOT $\phi 13.59$ [0.535] MOUNTING HOLES ON 106.2 [4.18] DIA. BOLT CIRCLE

3 CASE DRAIN: 00 = NO CASE DRAIN

4 SENSOR OUTPUT WILL BE 60 ELECTRICAL PULSES PER SHAFT REVOLUTION.
 SUPPLY VOLTAGE: 8 TO 28 Vdc
 OUTPUT VOLTAGE: LOW .5 Vdc AT 10 mA; HIGH Vs-1 Vdc

CS REVIEWED FOR CLASSIFICATION PER ESP-042

DRAWING BASED ON ANSI Y14.5M-1982

UNLESS OTHERWISE SPECIFIED ALL DIMENSIONS ARE IN
 INCHES
 MILLIMETERS

TOLERANCES
 x ± ----
 .xx ± REF
 .xxx ± ONLY
 < ± ----

UNSPECIFIED RADII ARE ----
 UNSPECIFIED DRAFT ANGLES ARE ----

DRAWING FORMAT
 CADD MANUAL

THE REPRODUCTION, DISTRIBUTION, AND UTILIZATION OF THIS DOCUMENT, AS WELL AS THE COMMUNICATION OF ITS CONTENTS TO OTHERS WITHOUT EXPLICIT AUTHORIZATION IS PROHIBITED. OFFENDERS WILL BE HELD LIABLE FOR THE PAYMENT OF DAMAGES. ALL RIGHTS RESERVED IN THE EVENT OF THE GRANT OF A PATENT, UTILITY MODEL, OR DESIGN. (PER ISO 16016)

Danfoss

DRAWN BY/DATE SMM 09-20-02
 CHECKED BY/DATE MLL 09-27-02
 ENGRG BY/DATE JDM 09-30-02
 METALLURGY BY/DATE ----

MATERIAL/HEAT TREAT
 TITLE
 H MOTOR INSTALLATION

MICROINCHES
 MILLIMETERS

NUMBER
 A-37-477

ARITHMETICAL AVERAGE
 SCALE 1/1
 SHEET 1 OF 1